

**BOARD OF PUBLIC WORKS  
MEMBERS**

**AURA GARCIA**  
PRESIDENT

**M. TERESA VILLEGAS**  
VICE PRESIDENT

**DR. MICHAEL R. DAVIS**  
PRESIDENT PRO TEMPORE

**VAHID KHORSAND**  
COMMISSIONER

**SUSANA REYES**  
COMMISSIONER

**DR. FERNANDO CAMPOS**  
EXECUTIVE OFFICER

# CITY OF LOS ANGELES

CALIFORNIA



**KAREN BASS**  
MAYOR

**DEPARTMENT OF  
PUBLIC WORKS  
BUREAU OF  
ENGINEERING**

**TED ALLEN, PE**  
CITY ENGINEER

1149 S. BROADWAY, SUITE 700  
LOS ANGELES, CA 90015-2213

<http://eng.lacity.org>

June 23, 2023

The Honorable City Council  
c/o Holly L. Wolcott  
City Clerk  
Room 360, City Hall

## **COUNCIL FILE NO. 15-0719-S27 – CITY MOBILITY PLAN 2035 / NEIGHBORHOOD ENHANCED NETWORK (NEN) / PEDESTRIAN BRIDGES AND TUNNELS**

### **SUMMARY**

This report provides recommended accessibility improvements to the pedestrian bridges and tunnels in the Third Council District.

### **RECOMMENDATION**

That the City Council,

1. Direct the Bureau of Engineering to submit a request for funding in the next annual Capital and Technology Improvement Expenditure Program (CTIEP) budget to perform the proposed improvements identified in this report.

### **BACKGROUND**

On February 10, 2023, the City Council adopted the subject motion instructing the Bureau of Engineering to report on the following:

- A list of pedestrian bridges and tunnels in the Third Council District.
- The entity that owns or has primary responsibility for maintaining the bridge or tunnel.
- Resources necessary to assess each bridge and tunnel for ADA compliance, lighting and safety issues, curb cuts and other deficiencies that must be corrected to make them safe, inviting and usable by the public;
- Resources necessary to implement these improvements; and
- Potential sources for funding improvements.



Some of these pedestrian bridges and tunnels are not ADA-accessible or usable by bicycles, scooters or other micromobility vehicles due to steps, posts, or other barriers; some are not optimally useful because they are not connected to sidewalks or do not have convenient curb cuts. The lack of lighting also presents safety and security challenges. In the Third District, the Los Angeles River, Aliso Creek, and Browns Canyon Wash have existing or planned bicycle or multi-use paths that are part of the low-stress active transportation network. Freeway bridges and tunnels provide alternatives to congested and dangerous entrances and exits and, where the 101 freeway closely parallels Ventura Boulevard, provide access to shopping, services, schools, and employment centers.

## DISCUSSION

The Bureau of Engineering prepared the following list of pedestrian bridges and tunnels located in the Third Council District (refer to Exhibit A for location photographs) along with estimated costs for potential improvements at the specified locations. Bollards were likely originally installed to prevent motorized vehicles from accessing the various bridges and tunnels but also present potentially hazardous obstacles for bicycles and other micromobility vehicles. Removal of the bollards will require Caltrans or US Army Corps of Engineers (USACE) concurrence and approval.

<b>PEDESTRIAN BRIDGES &amp; TUNNELS IN COUNCIL DISTRICT 3</b>				
	<b>Title and Location</b>	<b>Structure Type</b>	<b>Jurisdiction</b>	<b>Maintainer</b>
<b>101 Freeway</b>	Etiwanda Ave Pedestrian Tunnel U/Ventura Fwy	Pedestrian Tunnel	Caltrans	State of California
	Yolanda Ave Pedestrian Tunnel U/Ventura Fwy	Pedestrian Tunnel	Caltrans	State of California
	Vanalden Ave Pedestrian Tunnel U/Ventura Fwy	Pedestrian Tunnel	Caltrans	State of California
	Shirley Ave Pedestrian Tunnel U/Ventura Fwy	Pedestrian Tunnel	Caltrans	State of California
	Oakdale Ave Pedestrian Tunnel U/Ventura Fwy	Pedestrian Tunnel	Caltrans	State of California
	Sale Ave Ped Tunnel U/Ventura Fwy	Pedestrian Tunnel	Caltrans	State of California
	Del Valle St Pedestrian Bridge O/Ventura Fwy	Pedestrian Bridge	Caltrans	City of LA
<b>L.A. River</b>	Reseda Park Pedestrian Bridge O/Los Angeles River	Pedestrian Bridge	USACE	City of LA
	Vanalden Ave Pedestrian Bridge O/Los Angeles River	Pedestrian Bridge	USACE	City of LA
	Amigo Ave Pedestrian Bridge O/Los Angeles River	Pedestrian Bridge	USACE	City of LA
	Variel Ave Pedestrian Bridge O/Los Angeles River	Pedestrian Bridge	USACE	City of LA

	<b>Title and Location</b>	<b>Structure Type</b>	<b>Jurisdiction</b>	<b>Maintainer</b>
<b>Aliso Creek</b>	Valerio St Pedestrian Bridge O/Aliso Creek	Pedestrian Bridge	USACE	City of LA
	Hart St Pedestrian Bridge O/Aliso Creek	Pedestrian Bridge	USACE	City of LA
	Arminta St Pedestrian Bridge O/Aliso Creek	Pedestrian Bridge	USACE	City of LA
<b>Browns Creek</b>	Valerio St Pedestrian Bridge O/Browns Creek	Pedestrian Bridge	USACE	City of LA
	Arminta St. Pedestrian Bridge O/Browns Creek	Pedestrian Bridge	USACE	City of LA
<b>Bell Creek</b>	Glade Ave Pedestrian Bridge O/Bell Creek	Pedestrian Bridge	USACE	City of LA
<b>Calabasas Creek</b>	Kittridge St Pedestrian Bridge O/Calabasas Creek	Pedestrian Bridge	USACE	City of LA
<b>Caballero Creek</b>	Doman Ave Pedestrian Bridge O/Caballero Creek	Pedestrian Bridge	USACE	City of LA
	Wilbur Ave Pedestrian Bridge at Collins Street	Pedestrian Bridge	City of LA	City of LA

**IMPROVEMENT RECOMMENDATIONS**

1. 531380 – Etiwanda Ave Pedestrian Tunnel Improvements

<b>Proposed Work</b>	<b>Estimated Costs</b>
Install North Side ADA Curb Ramp	\$10,000
Construct North Side Concrete path from parking lot	\$3,000
Remove North Side Steel Bollard <b>(Caltrans Approval Required)</b>	\$1,000
Upgrade Tunnel Lighting	\$20,000
Remove South Side Steel Bollard <b>(Caltrans Approval Required)</b>	\$1,000
Install South Side ADA Curb Ramp	\$10,000
<b>Estimated Total</b>	<b>\$45,000</b>

2. 531381 – Yolanda Ave Pedestrian Tunnel Improvements

<b>Proposed Work</b>	<b>Estimated Costs</b>
Remove North Side Steel Bollard <b>(Caltrans Approval Required)</b>	\$1,000
Upgrade Tunnel Lighting	\$20,000
Remove South Side Steel Bollard <b>(Caltrans Approval Required)</b>	\$1,000
Install South Side ADA Curb Ramp	\$10,000
<b>Estimated Total</b>	<b>\$32,000</b>

## 3. 531385 – Vanalden Ave Pedestrian Tunnel Improvements

<b>Proposed Work</b>	<b>Estimated Costs</b>
<b>Please note that the tunnel is currently closed.</b>	
Install North Side ADA Curb Ramp	\$10,000
Remove North Side Steel Bollard <b>(Caltrans Approval Required)</b>	\$1,000
Upgrade Tunnel Lighting	\$20,000
Remove South Side Steel Bollard <b>(Caltrans Approval Required)</b>	\$1,000
<b>Estimated Total</b>	<b>\$32,000</b>

## 4. 531399 – Shirley Ave Pedestrian Tunnel Improvements

<b>Proposed Work</b>	<b>Estimated Costs</b>
Install North Side ADA Curb Ramp	\$10,000
Remove North Side Steel Bollard <b>(Caltrans Approval Required)</b>	\$1,000
Upgrade Tunnel Lighting	\$20,000
Remove South Side Steel Bollard <b>(Caltrans Approval Required)</b>	\$1,000
Install South Side ADA Curb Ramp	\$10,000
Repair South Alley for better access path	\$5,000
<b>Estimated Total</b>	<b>\$47,000</b>

## 5. 531400 – Oakdale Ave Pedestrian Tunnel Improvements

<b>Proposed Work</b>	<b>Estimated Costs</b>
Install North Side ADA Curb Ramp	\$10,000
Remove North Side Steel Bollard <b>(Caltrans Approval Required)</b>	\$1,000
Upgrade Tunnel Lighting	\$20,000
Remove South Side Steel Bollard <b>(Caltrans Approval Required)</b>	\$1,000
Install South Side ADA Curb Ramp	\$10,000
Replace South Side Concrete at entrance and repair alley	10,000
<b>Estimated Total</b>	<b>\$52,000</b>

6. 531163 – Sale Ave Pedestrian Tunnel Improvements

<b>Proposed Work</b>	<b>Estimated Costs</b>
Install North Side ADA Curb Ramp	\$10,000
Remove North Side Steel Bollard <b>(Caltrans Approval Required)</b>	\$1,000
Upgrade Tunnel Lighting	\$20,000
Remove South Side Steel Bollard <b>(Caltrans Approval Required)</b>	\$1,000
Install South Side ADA Curb Ramp	\$10,000
Replace South Side Concrete at entrance	\$3,000
<b>Estimated Total</b>	<b>\$45,000</b>

7. 531162 – Del Valle St Pedestrian Bridge Improvements

<b>Proposed Work</b>	<b>Estimated Costs</b>
Install North Side ADA Curb Ramp	\$10,000
Remove North Side Steel Bollard <b>(USACE Approval Required)</b>	\$1,000
Remove South Side Steel Bollard <b>(USACE Approval Required)</b>	\$1,000
Install South Side ADA Curb Ramp	\$10,000
Replace South Side Concrete at entrance	\$1,200
Replace Side fence	\$2,400
<b>Estimated Total</b>	<b>\$25,600</b>

8. 000856 – Reseda Park Pedestrian Bridge Improvements

<b>Proposed Work</b>	<b>Estimated Costs</b>
Upgrade Bridge Lighting	\$20,000
Replace South Side Pavement at entrance	\$4,000
<b>Estimated Total</b>	<b>\$24,000</b>

9. 000859 – Vanalden Ave Pedestrian Bridge Improvements

<b>Proposed Work</b>	<b>Estimated Costs</b>
North Side ADA Curb Ramp Install	\$10,000
North Side Steel Bollard Removal <b>(USACE Approval Required)</b>	\$1,000
South Side Steel Bollard Removal <b>(USACE Approval Required)</b>	\$1,000
South Side ADA Curb Ramp Install	\$10,000
South Side Concrete replacement at entrance and alley	\$2,000
<b>Estimated Total</b>	<b>\$24,000</b>

10. 000864 – Amigo Ave Pedestrian Bridge Improvements

<b>Proposed Work</b>	<b>Estimated Costs</b>
North Side ADA Curb Ramp Install	\$10,000
North Side Steel Bollard Removal <b>(USACE Approval Required)</b>	\$1,000
South Side Steel Bollard Removal <b>(USACE Approval Required)</b>	\$1,000
South Side ADA Curb Ramp Install	\$10,000
South Side Concrete replacement at entrance	\$2,000
<b>Estimated Total</b>	<b>\$24,000</b>

11. 000915 – Variel Ave Pedestrian Bridge Improvements

<b>Proposed Work</b>	<b>Estimated Costs</b>
North Side Steel Bollard Removal <b>(USACE Approval Required)</b>	\$3,000
South Side Steel Bollard Removal <b>(USACE Approval Required)</b>	\$3,000
<b>Estimated Total</b>	<b>\$6,000</b>

12. 000834 – Valerio St Pedestrian Bridge Improvements

<b>Proposed Work</b>	<b>Estimated Costs</b>
Remove asphalt concrete, install West Side ADA Curb Ramp	\$7,000
Remove West Side Steel Bollard <b>(USACE Approval Required)</b>	\$1,000
Install East Side ADA Curb Ramps on both sides of the bridge.	\$20,000
<b>Estimated Total</b>	<b>\$28,000</b>

13. 000836 – Hart St Pedestrian Bridge Improvements

<b>Proposed Work</b>	<b>Estimated Costs</b>
Install West Side AC Pavement	\$30,000
Remove West Side Steel Bollard <b>(USACE Approval Required)</b>	\$2,000
Remove East Side Steel Bollard <b>(USACE Approval Required)</b>	\$2,000
<b>Estimated Total</b>	<b>\$34,000</b>

14. 000936 – Arminta St Pedestrian Bridge Improvements

<b>Proposed Work</b>	<b>Estimated Costs</b>
Install West Side ADA Curb Ramp	\$10,000
Remove West Side Steel Bollard <b>(USACE Approval Required)</b>	\$2,000
Remove East Side Steel Bollard <b>(USACE Approval Required)</b>	\$2,000
Install East Side ADA Curb Ramp	\$10,000
Replace concrete at East Side Entrance	\$2,000
Clear shrubs and replace fence	\$10,000
<b>Estimated Total</b>	<b>\$36,000</b>

15. 000932 – Valerio St Pedestrian Bridge Improvements

<b>Proposed Work</b>	<b>Estimated Costs</b>
<b>Please note that the tunnel is currently closed.</b>	
Install West Side ADA Curb Ramp	\$10,000
Remove West Side Steel Bollard <b>(USACE Approval Required)</b>	\$3,000
Remove fence if access is to be restored	\$1,000
Clear shrubs and replace fence	\$3,000
Place cold mix asphalt to assist with step at bridge	\$4,000
Remove East Side Steel Bollard <b>(USACE Approval Required)</b>	\$3,000
Install East Side ADA Curb Ramp	\$10,000
<b>Estimated Total</b>	<b>\$34,000</b>

16. 000988 – Arminta St Pedestrian Bridge Improvements

<b>Proposed Work</b>	<b>Estimated Costs</b>
Install West Side ADA Curb Ramp	\$10,000
Remove West Side Steel Bollard (USACE Approval Required)	\$2,000
Place cold mix asphalt to assist with steps at bridge	\$8,000
Remove East Side Steel Bollard (USACE Approval Required)	\$2,000
Install East Side ADA Curb Ramp	\$10,000
Clear Shrubs	\$500
<b>Estimated Total</b>	<b>\$32,500</b>

17. 000980 – Glade Ave Pedestrian Bridge Improvements

<b>Proposed Work</b>	<b>Estimated Costs</b>
Install South Side ADA Curb Ramp	\$10,000
Remove South Side Steel Bollard <b>(USACE Approval Required)</b>	\$1,000
Remove North Side Steel Bollard <b>(USACE Approval Required)</b>	\$5,000
<b>Estimated Total</b>	<b>\$16,000</b>

18. 001030 – Kittridge St Pedestrian Bridge Improvements

<b>Proposed Work</b>	<b>Estimated Costs</b>
Install East Side ADA Curb Ramp on both sides of street and replace concrete	\$20,000
Remove East Side Steel Bollard <b>(USACE Approval Required)</b>	\$1,000
Place cold mix asphalt to assist with step at bridge	\$4,000
Remove West Side Steel Bollard <b>(USACE Approval Required)</b>	\$1,000
Replace broken concrete	\$5,000
<b>Estimated Total</b>	<b>\$31,000</b>

19. 000758 – Doman Ave Pedestrian Bridge Improvements

<b>Proposed Work</b>	<b>Estimated Costs</b>
Install East Side ADA Curb Ramp on both sides of street and replace concrete as needed	\$20,000
Install West Side ADA Curb Ramp	\$5,000
<b>Estimated Total</b>	<b>\$25,000</b>

20. 000623 – Wilbur Ave Pedestrian Bridge Improvements

<b>Proposed Work</b>	<b>Estimated Costs</b>
Existing conditions to remain	-
<b>Estimated Total</b>	<b>-</b>



**FISCAL IMPACT**

The following table includes a summary cost estimate for the recommended improvements. Funding could potentially be provided from funds such as Measure R, Measure M, Gas Tax, or the Road Maintenance and Rehabilitation Program (SB1).

<b>Proposed Work</b>	<b>Estimated Costs</b>
Utility Coordination, Planning & Design	\$150,000
Construction	\$593,100
Contingency (25%)	\$148,275
<b>Total Estimated Costs</b>	\$891,375 (\$900,000 Rounded)

Respectfully submitted,



For Ted Allen, P.E.  
City Engineer

TA/KM:sg:em;eg

Box\EXE\\_Ready for Signature\TSA\Outbox\Archived\2023\Correspondence\Corrected Council File 15-0719-S27 Report Back.docx

Attachment

cc: Aura Garcia, Board of Public Works  
Teresa Villegas, Board of Public Works

01. 531380 - Ediwanda Ave Pedestrian Tunnel



02. 531381 - Yolanda Ave Pedestrian Tunnel





03. 531385 - Vanalden Ave Pedestrian Tunnel



04. 531399 - Shirley Ave Pedestrian Tunnel



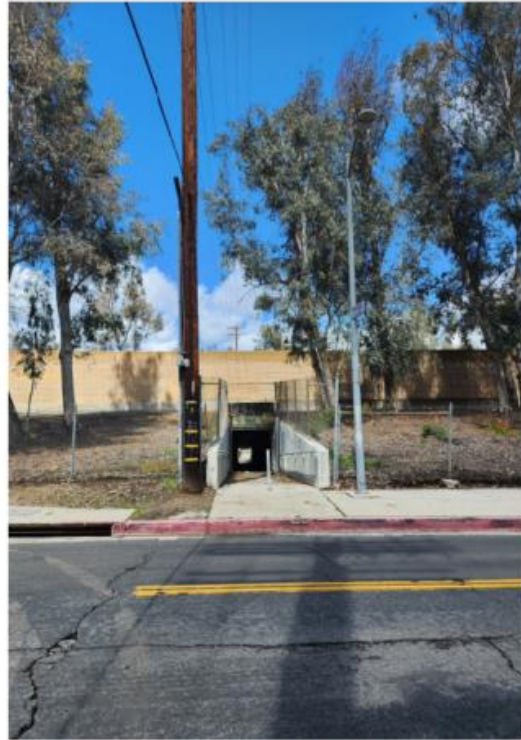


05. 531400 - Oakdale Ave Pedestrian Tunnel





06. 531163 - Sale Ave Pedestrian Tunnel



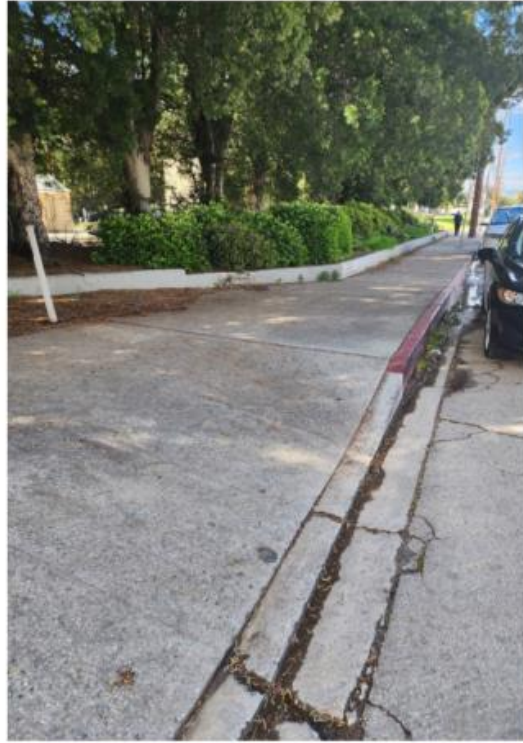


07. 531162 - Del Valle St Pedestrian Bridge





08. 000856 - Reseda Park Pedestrian Bridge



09. 000859 - Vanalden Ave Pedestrian Bridge

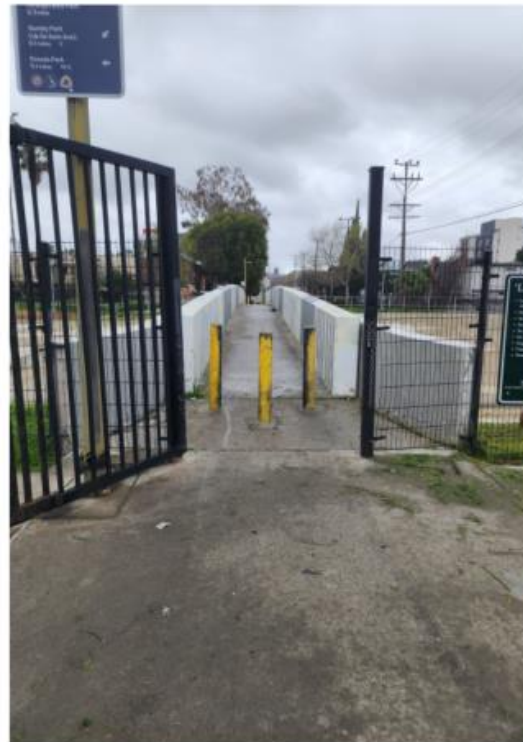




10. 000864 - Amigo Ave Pedestrian Bridge



11. 000915 - Variel Ave Pedestrian Bridge





12. 000834 - Valerio St Pedestrian Bridge

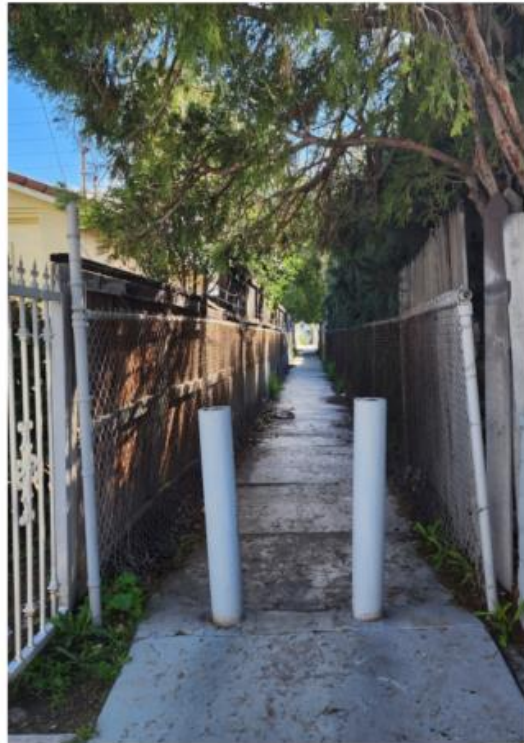


13. 000836 - Hart St Pedestrian Bridge





14. 000936 - Arminta St Pedestrian Bridge



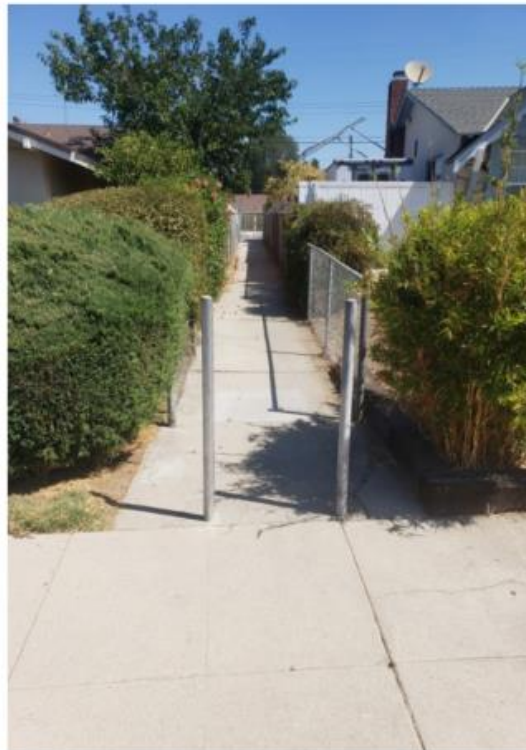
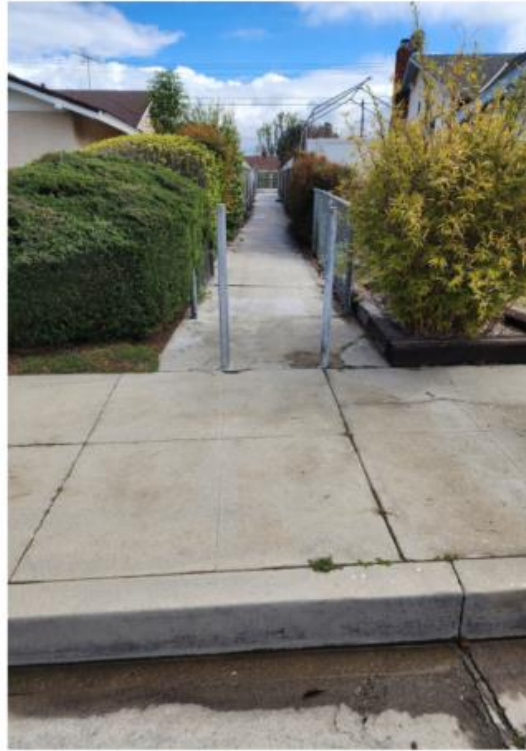


15. 000932 - Valerio St Pedestrian Bridge



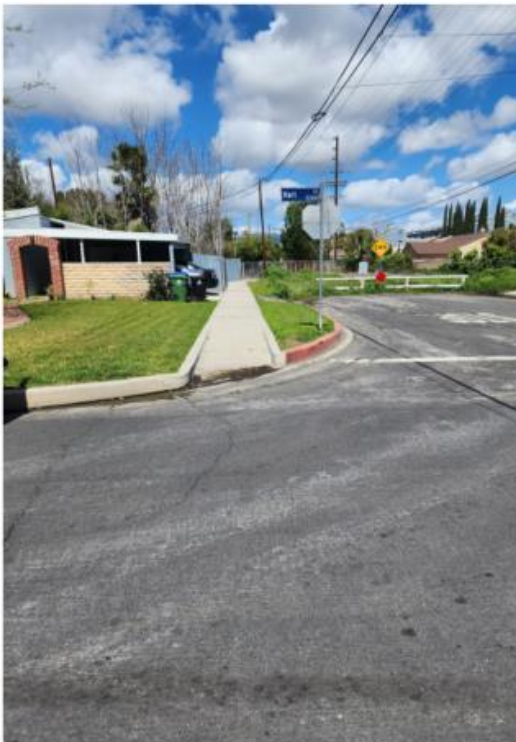


16. 000988 - Arminta St Pedestrian Bridge



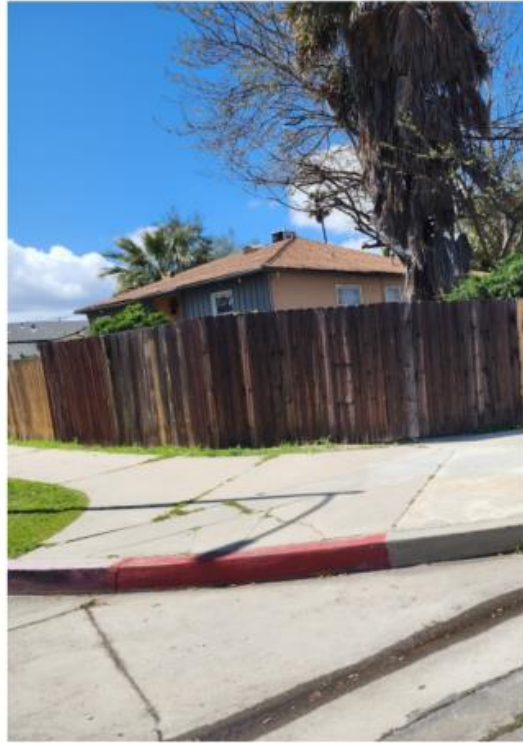


17. 000980 - Glade Ave Pedestrian Bridge



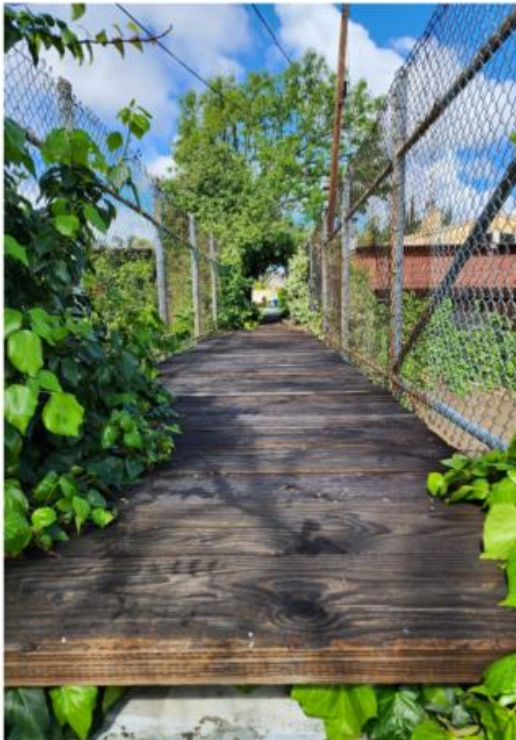
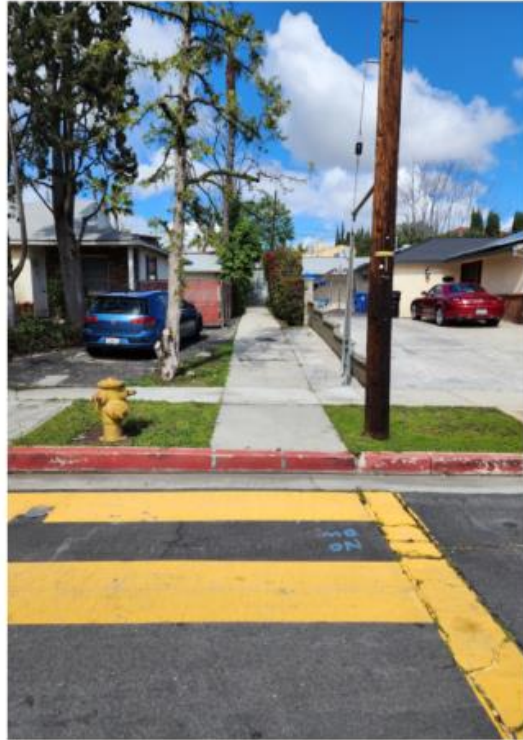


18. 001030 - Kittridge St Pedestrian Bridge





19. 000758 - Doman Ave Pedestrian Bridge





20. 000623 - Vilbur Ave Pedestrian Bridge

