

**BOARD OF PUBLIC WORKS
MEMBERS**

AURA GARCIA
PRESIDENT

M/ TERESA VILLEGAS
VICE PRESIDENT

DR. MICHAEL R. DAVIS
PRESIDENT PRO TEMPORE

VAHID KHORSAND
COMMISSIONER

SUSANA REYES
COMMISSIONER

CITY OF LOS ANGELES

CALIFORNIA



KAREN BASS
MAYOR

**OFFICE OF THE
BOARD OF PUBLIC WORKS**

DR. FERNANDO CAMPOS
EXECUTIVE OFFICER

200 NORTH SPRING STREET
ROOM 361, CITY HALL
LOS ANGELES, CA 90012

TEL: (213) 978-0261
TDD: (213) 978-2310
FAX: (213) 978-0278

<http://bpw.lacity.org>

January 18, 2023

Council Hearing – 1/24/2023
Council File No. 22-0900-S74

City Council
Room No. 395
City Hall

Honorable Members:

ASSESSMENT HEARING # 7 – HASKELL AVENUE AND BASSETT STREET

Inasmuch as no one protested the assessments pursuant to the hearing scheduled this date, in connection with the maintenance for Haskell Avenue and Bassett Street - Street Lighting Maintenance Assessment District, the Board of Public Works recommends that the assessments therefore be confirmed.

Sincerely,

DR. FERNANDO CAMPOS,
Executive Officer, Board of Public Works

FC:lc

CC: Director, Bureau of Street Lighting



**DEPARTMENT OF PUBLIC WORKS
BUREAU OF STREET LIGHTING**

#3255

DATE OCT 20 2022

C.D. 06

Honorable City Council
of the City of Los Angeles

**HASKELL AVENUE AND BASSETT STREET
STREET LIGHTING MAINTENANCE ASSESSMENT DISTRICT**

This report submits the proposed Ordinance of Intention to institute maintenance assessment proceedings for the above street lighting project.

RECOMMENDATIONS

1. Council adopt this report and the Ordinance of Intention, and that the proceedings be conducted in accordance with Sections 6.95 - 6.127 of the Los Angeles Administrative Code, Section 53753 of the California Government Code, and Proposition 218 (Articles XIII C and XIII D of the California Constitution). This includes Council holding a Public Hearing for the proposed District Diagram with City page numbers 15716.
2. Upon Council adoption of the Ordinance of Intention, the Bureau of Street Lighting be instructed to: Mail notices of the assessment ballot proceedings, and Mail assessment ballots (as required by Prop. 218) to the property owners in the lighting district.
3. Upon completion of Item 2 above, the City Clerk be instructed to conduct the assessment ballot proceedings (i.e. count, certify, and report the results of the assessment ballot proceedings to the Council).
4. Following the conclusion of the final public hearing, if a project has weighted "YES" votes equal to, or in excess of weighted "NO" votes, the Council shall deny the appeals, confirm the maintenance assessments, and adopt the Final Ordinance levying the assessments. If the weighted "NO" votes are in excess of weighted "YES" votes, Council will abandon the lighting district and proceedings in accordance with Proposition 218; and the affected street lighting system shall be removed from service or not be constructed.
5. A copy of this report be provided to each affected Council office and the Mayor's Office of Economic Development.

The passage of Proposition 218 on November 5, 1996, requires a vote of the property owners prior to Council confirming and levying the assessments for maintenance. Upon adoption of the transmitted Ordinance of Intention, the Council shall set a date for hearing appeals and the last day to receive completed assessment ballots. A hearing to be held by the Board of Public Works will be scheduled at least one week prior to the date of the public hearing for the City Council to review and resolve any appeals concerning the proposed maintenance assessments – as specified in the Engineer's Report. If the assessment ballot proceeding as required by Proposition 218 approves these assessments, the City Council may confirm and levy the assessments. If levied, the administration of this district may be combined with that of another district or districts in the future as provided in the Ordinance of Intention. Protests that are received, as described in the Administrative Code, are for the consideration of the Council, but are not binding. Only a weighted majority vote against the assessment is binding.

The assessments to be levied to pay for the cost and expenses of the work or improvements in the proposed HASKELL AVENUE AND BASSETT STREET Street Lighting Maintenance Assessment District (or Sidewalk Maintenance Assessment District) fall within the (e)7 exemption of Prop 26. As set forth in the accompanying Ordinance of Intention, said assessments will be imposed in accordance with the provisions of Article XIID of the California Constitution.

In accordance with Council Policy adopted on December 11, 1998, the Bureau of Street Lighting will cast ballots in favor of the assessments for all Council controlled public properties in the district.


SUMMARY

TOTAL STREETLIGHTS:	2
AFFECTED PARCELS:	4
TOTAL ASSESSMENTS:	\$ 1,509.69
TAX YEAR:	2022/2023
TYPE OF PROJECT:	PROPOSED PRIVATE DEVELOPMENT PROJECT

1. Ordinance of Intention, approved as to form and legality by the City Attorney, for the proposed assessment district.
2. Engineer's Report as required by Proposition 218.
3. Proposed assessment roll.
4. Diagram delineating those lands proposed to be assessed.

Report prepared by:
Assessment Engineering Division
Proposition 218 Compliance Section
S. Aboulhosn, Street Lighting Engineering Associate II
Ruben Flamenco, P.E., Division Manager

Respectfully submitted,


Miguel Sangalang, Executive Director
Bureau of Street Lighting

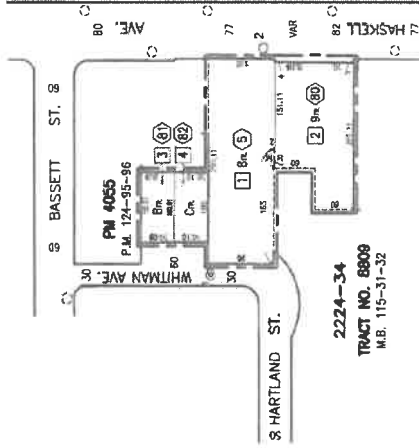
LAND USE METHOD



SCALE
1"=100'

PRIOR TO THE FOLLOWING DATES, THE LISTED
PARCELS WERE ASSESSED UNDER THE REFERENCE
NUMBERS AS SHOWN:

DATE _____ PARCEL NO. _____ DIST. _____ PAGE _____



COUNCIL DISTRICT NO. 6
PROJECT ID NO. 5412

2224 34
C.U.B. Parcel(s)

DISTRICT OUTLINED BY Ray A. Davis
DISTRICT CHECKED BY Ruben F. Hernandez
APPROVED October 20, 2022

Kenneth B. Martin, Jr., Assistant Director
Bureau of Street Lighting

By Ruben F. Hernandez
Engineer

In Serv. _____ Date _____ By _____
Drawn _____ P. 10-21 B. 11-11 W. 11-11 Plan
Sheet No. _____ BR60606
418 Street Light Page 51 Old 52

15716 1 of 1

HASKELL AVE. & BASSETT ST. L.D.

H:\PROJECTS\LA\15716\15716-001\15716-001.dwg Sep 13, 2022 - 12:43pm

MAINTENANCE ASSESSMENT DIAGRAM
FOR PROPOSITION 216 REQUIREMENTS
FOR THE FURNISHING OF ELECTRIC ENERGY & MAINTENANCE FOR
THE LIGHTING OF SAID DISTRICT IN THE CITY OF LOS ANGELES
KENNETH B. MARTIN, JR., ASSISTANT DIRECTOR - BUREAU OF STREET LIGHTING
THE DISTRICT BOUNDARIES OF THE ASSESSMENT DISTRICT ARE SHOWN

- ① Indicates L.A. County APN
- ② Indicates L.A. City Assessment Number
- ③ Indicates New Electrolux - CODED 2000 PSE 80
- ④ Indicates New Electrolux - CODED 1995 PSE 10
- ⑤ Indicates New Electrolux - CODED 1995 PSE 10
- ⑥ Indicates New Electrolux - CODED 1995 PSE 10
- ⑦ Indicates New Electrolux - CODED 1995 PSE 10
- ⑧ Indicates New Electrolux - CODED 1995 PSE 10
- ⑨ Indicates New Electrolux - CODED 1995 PSE 10
- ⑩ Indicates New Electrolux - CODED 1995 PSE 10
- ⑪ Indicates New Electrolux - CODED 1995 PSE 10
- ⑫ Indicates New Electrolux - CODED 1995 PSE 10
- ⑬ Indicates New Electrolux - CODED 1995 PSE 10
- ⑭ Indicates New Electrolux - CODED 1995 PSE 10
- ⑮ Indicates New Electrolux - CODED 1995 PSE 10
- ⑯ Indicates New Electrolux - CODED 1995 PSE 10
- ⑰ Indicates New Electrolux - CODED 1995 PSE 10
- ⑱ Indicates New Electrolux - CODED 1995 PSE 10
- ⑲ Indicates New Electrolux - CODED 1995 PSE 10
- ⑳ Indicates New Electrolux - CODED 1995 PSE 10
- ㉑ Indicates New Electrolux - CODED 1995 PSE 10
- ㉒ Indicates New Electrolux - CODED 1995 PSE 10
- ㉓ Indicates New Electrolux - CODED 1995 PSE 10
- ㉔ Indicates New Electrolux - CODED 1995 PSE 10
- ㉕ Indicates New Electrolux - CODED 1995 PSE 10
- ㉖ Indicates New Electrolux - CODED 1995 PSE 10
- ㉗ Indicates New Electrolux - CODED 1995 PSE 10
- ㉘ Indicates New Electrolux - CODED 1995 PSE 10
- ㉙ Indicates New Electrolux - CODED 1995 PSE 10
- ㉚ Indicates New Electrolux - CODED 1995 PSE 10
- ㉛ Indicates New Electrolux - CODED 1995 PSE 10
- ㉜ Indicates New Electrolux - CODED 1995 PSE 10
- ㉝ Indicates New Electrolux - CODED 1995 PSE 10
- ㉞ Indicates New Electrolux - CODED 1995 PSE 10
- ㉟ Indicates New Electrolux - CODED 1995 PSE 10
- ㊱ Indicates New Electrolux - CODED 1995 PSE 10
- ㊲ Indicates New Electrolux - CODED 1995 PSE 10
- ㊳ Indicates New Electrolux - CODED 1995 PSE 10
- ㊴ Indicates New Electrolux - CODED 1995 PSE 10
- ㊵ Indicates New Electrolux - CODED 1995 PSE 10
- ㊶ Indicates New Electrolux - CODED 1995 PSE 10
- ㊷ Indicates New Electrolux - CODED 1995 PSE 10
- ㊸ Indicates New Electrolux - CODED 1995 PSE 10
- ㊹ Indicates New Electrolux - CODED 1995 PSE 10
- ㊺ Indicates New Electrolux - CODED 1995 PSE 10
- ㊻ Indicates New Electrolux - CODED 1995 PSE 10
- ㊼ Indicates New Electrolux - CODED 1995 PSE 10
- ㊽ Indicates New Electrolux - CODED 1995 PSE 10
- ㊾ Indicates New Electrolux - CODED 1995 PSE 10
- ㊿ Indicates New Electrolux - CODED 1995 PSE 10

DATE _____ BY _____

REVISION DESCRIPTION