

## **EXHIBIT B:**

### **Zone Change Ordinance Map**

---

CPC-2022-3413-CA, CPC-2022-3712-ZC, ENV-2022-3414-CE  
For consideration by the City Planning Commission

November 17, 2022

**ORDINANCE NO.**

An ordinance amending Section 12.04 Los Angeles Municipal Code (LAMC) by amending the zoning map.

**THE PEOPLE OF THE CITY OF LOS ANGELES  
DO ORDAIN AS FOLLOWS:**

**Sec. 1.** Section 12.04 of the Los Angeles Municipal Code is hereby amended by changing the zone classifications on properties shown upon portions of the Zoning Map attached thereto and Table 1 for Section 1 below, and incorporated herein by this reference, and made a part of Article 2, Chapter 1 of the Los Angeles Municipal Code.

**Table 1 for Section 1**

<b>Existing Zone</b>	<b>New Zone</b>
[Q]RD6-1-H-HCR	[Q]RD6-1-H-HCR-WLD
[T][Q]RD3-1-H	[T][Q]RD3-1-H-WLD
[Q]OS-1XL-HCR	[Q]OS-1XL-HCR-WLD
[Q]PF-1XL	[Q]PF-1XL-WLD
[Q]PF-1XL-H	[Q]PF-1XL-H-WLD
[Q]PF-1XL-HCR	[Q]PF-1XL-HCR-WLD
[Q]R3-1VL-HCR[Q]R3-1VL-HCR	[Q]R3-1VL-HCR[Q]R3-1VL-HCR-WLD
[Q]R3-1XL	[Q]R3-1XL-WLD
[Q]R3-1XL-HCR	[Q]R3-1XL-HCR-WLD
[Q]R4-1-H-HCR	[Q]R4-1-H-HCR-WLD
[Q]RD1.5-1	[Q]RD1.5-1-WLD
[Q]RD1.5-1VL	[Q]RD1.5-1VL-WLD
[Q]RD1.5-1VL-HCR	[Q]RD1.5-1VL-HCR-WLD
[Q]RD2-1VL-HCR	[Q]RD2-1VL-HCR-WLD
[T][Q]C1-1XL-HCR	[T][Q]C1-1XL-HCR-WLD
[T][Q]R4-1-H-HCR	[T][Q]R4-1-H-HCR-WLD

[T]RD2-1VL-H-HCR	[T]RD2-1VL-H-HCR-WLD
A1-1-H	A1-1-H-WLD
A1-1-H-HCR	A1-1-H-HCR-WLD
A1-1-H-RPD-HCR	A1-1-H-RPD-HCR-WLD
A1-1-HCR	A1-1-HCR-WLD
A1-1XL-HCR	A1-1XL-HCR-WLD
C1-1	C1-1-WLD
C2-1-HCR	C2-1-HCR-WLD
C2-1VL	C2-1VL-WLD
C2-1VL-RIO	C2-1VL-RIO-WLD
C4-1D-HCR	C4-1D-HCR-WLD
CR-1D-HCR	CR-1D-HCR-WLD
OS-1-H-HCR	OS-1-H-HCR-WLD
OS-1XL	OS-1XL-WLD
OS-1XL-H-HCR	OS-1XL-H-HCR-WLD
OS-1XL-HCR	OS-1XL-HCR-WLD
PB-1-HCR	PB-1-HCR-WLD
PF-1XL	PF-1XL-WLD
PF-1XL-HCR	PF-1XL-HCR-WLD
R1-1	R1-1-WLD
R1-1-HCR	R1-1-HCR-WLD
R1-1-RIO	R1-1-RIO-WLD
R2-1XL	R2-1XL-WLD
R3-1	R3-1-WLD
R4-1D-HCR	R4-1D-HCR-WLD
RA-1	RA-1-WLD
RD1.5-1	RD1.5-1-WLD

RD1.5-1XL-HCR	RD1.5-1XL-HCR-WLD
RD2-1VL-HCR	RD2-1VL-HCR-WLD
RD6-1-HCR	RD6-1-HCR-WLD
RE11-1	RE11-1-WLD
RE11-1-HCR	RE11-1-HCR-WLD
RE15-1	RE15-1-WLD
RE15-1-H	RE15-1-H-WLD
RE15-1-H-HCR	RE15-1-H-HCR-WLD
RE15-1-H-RPD-HCR	RE15-1-H-RPD-HCR-WLD
RE15-1-H#	RE15-1-H#-WLD
RE15-1-HCR	RE15-1-HCR-WLD
RE15-1VLD-RPD-HCR	RE15-1VLD-RPD-HCR-WLD
RE20-1	RE20-1-WLD
RE20-1-H	RE20-1-H-WLD
RE20-1-H-HCR	RE20-1-H-HCR-WLD
RE20-1-HCR	RE20-1-HCR-WLD
RE40-1	RE40-1-WLD
RE40-1-H	RE40-1-H-WLD
RE40-1-H-HCR	RE40-1-H-HCR-WLD
RE40-1-H-RPD	RE40-1-H-RPD-WLD
RE40-1-H-RPD-HCR	RE40-1-H-RPD-HCR-WLD
RE40-1-HCR	RE40-1-HCR-WLD
RE9-1	RE9-1-WLD
RE9-1-H-RPD-HCR	RE9-1-H-RPD-HCR-WLD
RE9-1-HCR	RE9-1-HCR-WLD



**Sec. 2.** Pursuant to Section 12.32 F of the Los Angeles Municipal Code, and any amendment thereto, the use of that property is subject to the regulations of the Wildlife Supplemental Use District regulations pursuant to Section 13.21 of the Los Angeles Municipal Code.

**Sec. 3.** Projects shall not be subject to the provisions of this ordinance if a complete application for an entitlement is filed and fees were paid prior to the date on which this ordinance becomes operative. Any such project shall be subject to the administrative regulations in Chapter 1 of the Los Angeles Municipal Code that were in effect on the date on which the application was filed.

**Sec. 4.** The City Clerk shall certify...

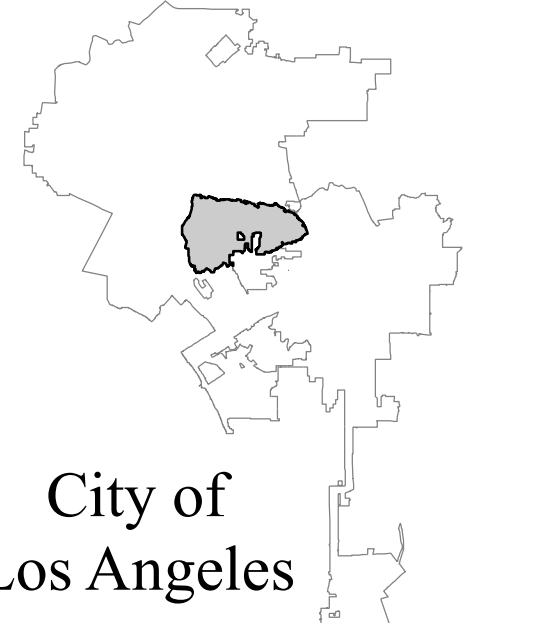
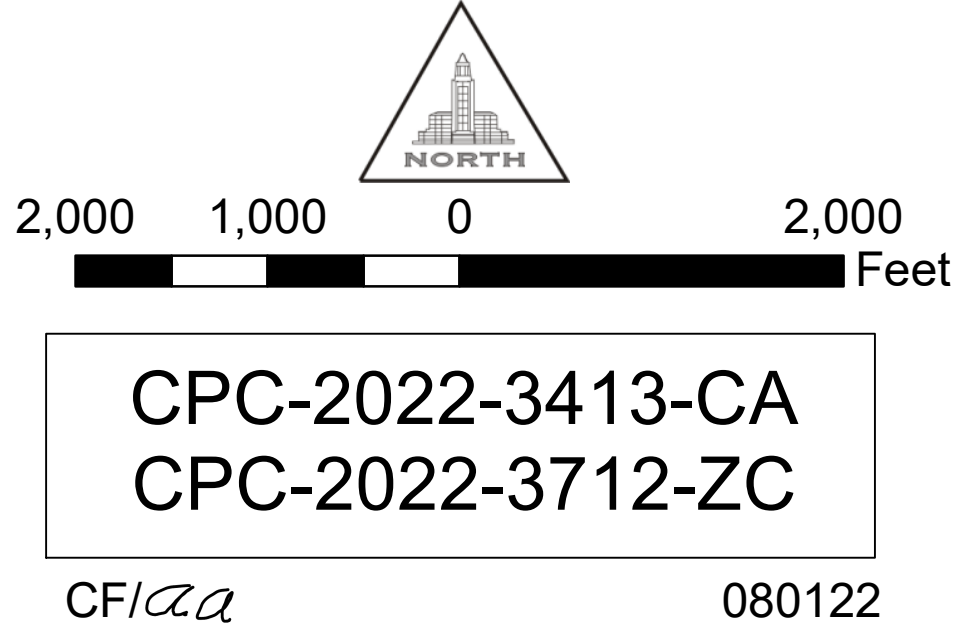




# Wildlife District "WLD"

- Wildlife District Boundary
- WLD

ALL ZONING AND HEIGHT DISTRICTS IN THE AFFECTED AREA REMAIN THE SAME. SUFFIX -WLD WAS ADDED BECAUSE THE AREA IS NOW INCLUDED IN THE WILDLIFE DISTRICT, CPC-2022-3413-CA. ALL BOUNDARIES FOLLOW CENTERLINES OF STREETS OR ALLEYS, EXCEPT WHERE NOTED OR DIMENSIONED.





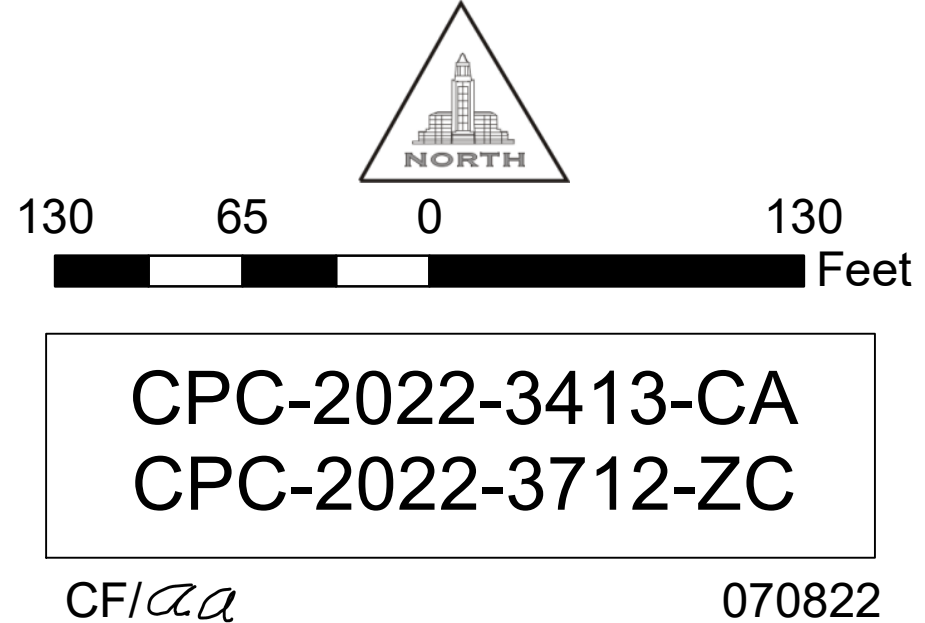


**Wildlife District "WLD"**

Wildlife District Boundary

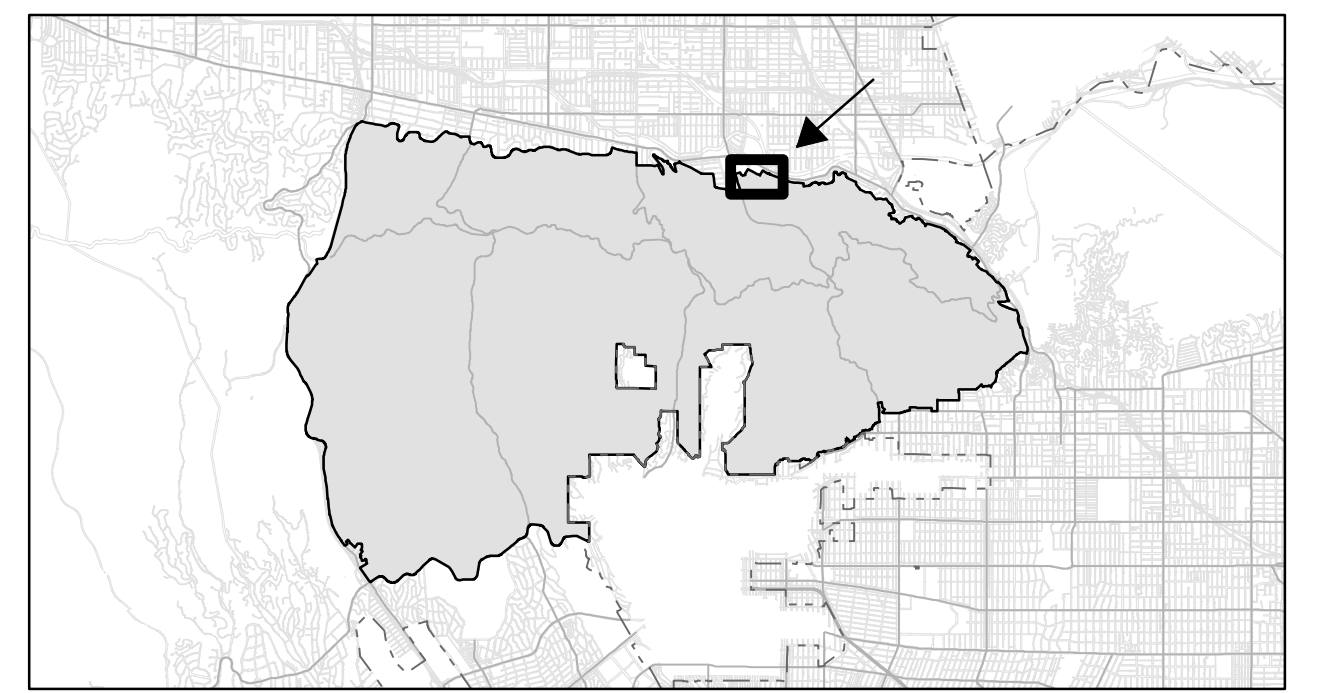
-WLD

ALL ZONING AND HEIGHT DISTRICTS IN THE AFFECTED AREA REMAIN THE SAME. SUFFIX -WLD WAS ADDED BECAUSE THE AREA IS NOW INCLUDED IN THE WILDLIFE DISTRICT, CPC-2022-3413-CA. ALL BOUNDARIES FOLLOW CENTERLINES OF STREETS OR ALLEYS, EXCEPT WHERE NOTED OR DIMENSIONED.



**Detail "A"**

Sheet  
2 of 12





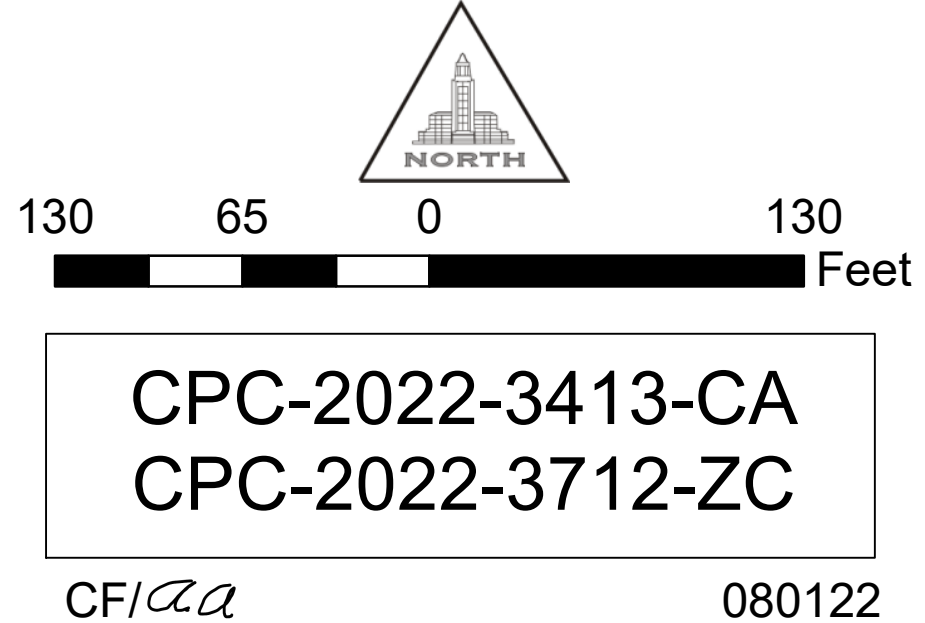


**Wildlife District "WLD"**

Wildlife District Boundary

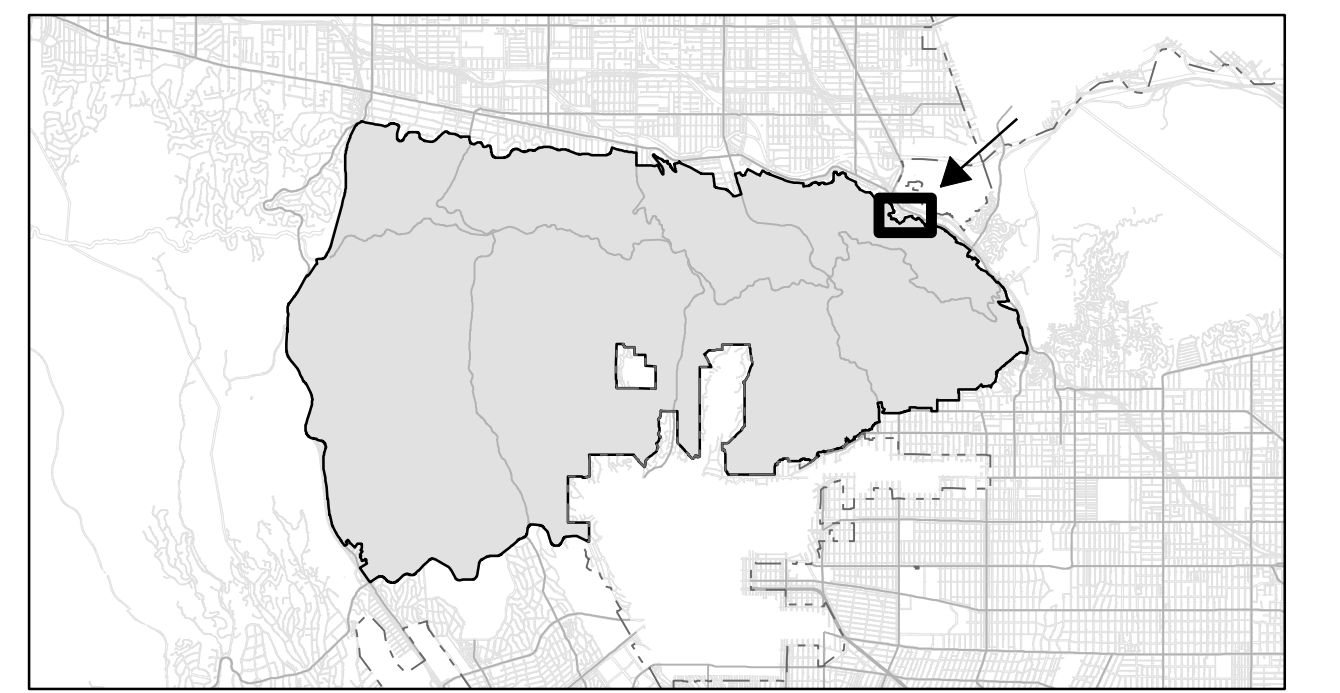
-WLD

ALL ZONING AND HEIGHT DISTRICTS IN THE AFFECTED AREA REMAIN THE SAME. SUFFIX -WLD WAS ADDED BECAUSE THE AREA IS NOW INCLUDED IN THE WILDLIFE DISTRICT, CPC-2022-3413-CA. ALL BOUNDARIES FOLLOW CENTERLINES OF STREETS OR ALLEYS, EXCEPT WHERE NOTED OR DIMENSIONED.



**Detail "B"**

Sheet  
3 of 12





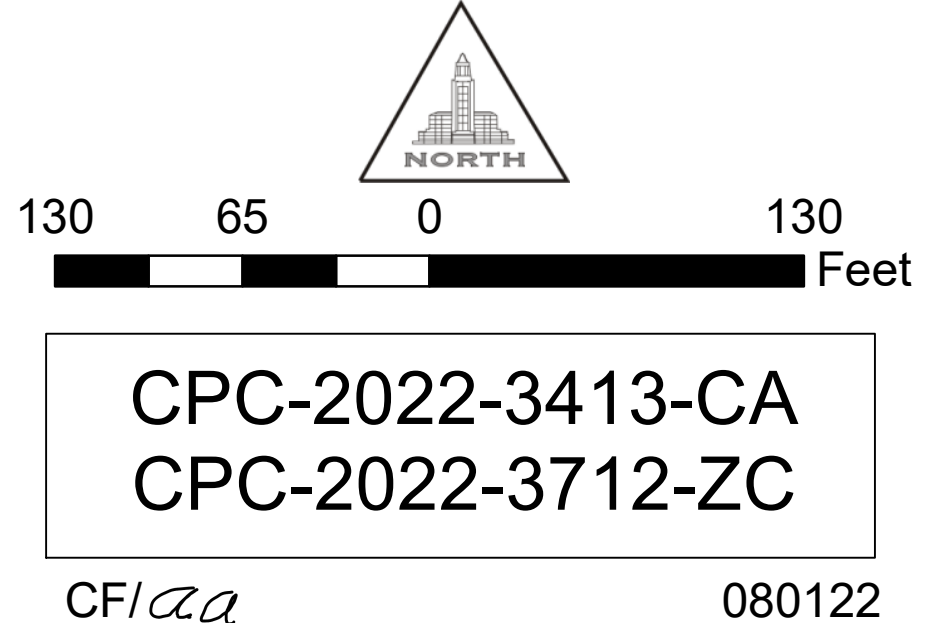


Wildlife District "WLD"

- Wildlife District Boundary
- WLD

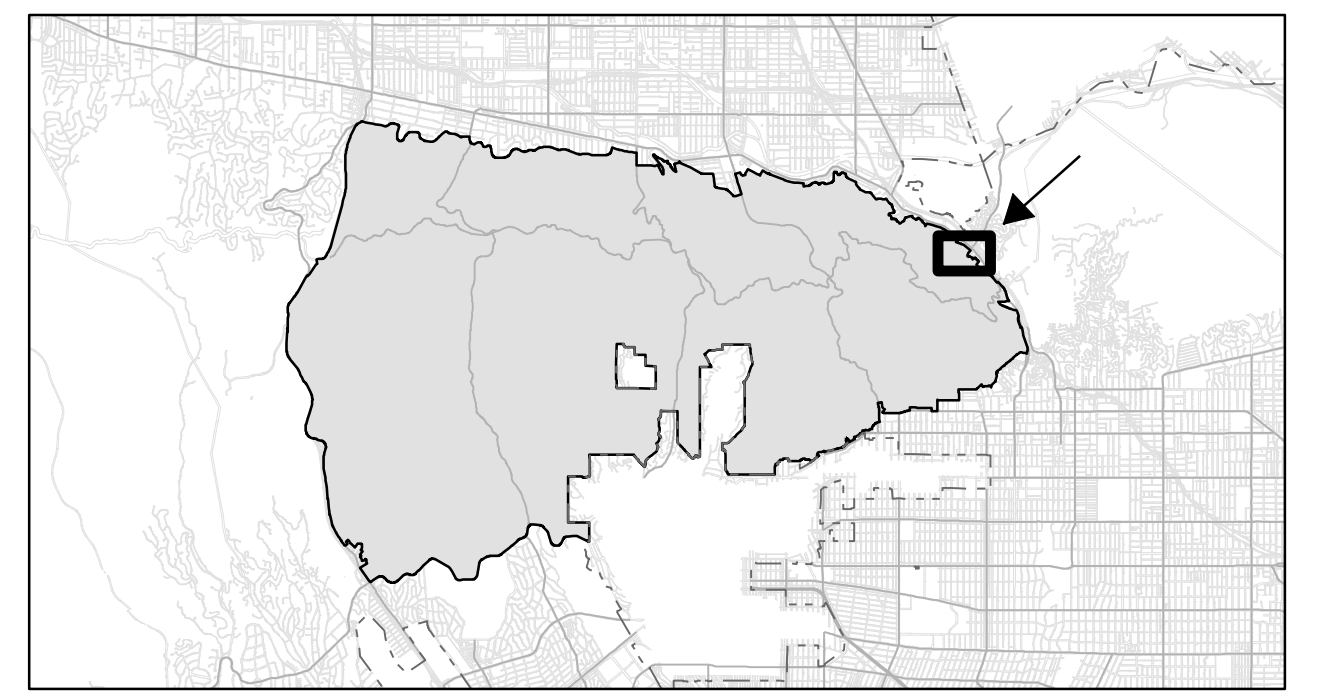
DATA SOURCES: DEPARTMENT OF CITY PLANNING-DEPARTMENT & BUREAU OF ENGINEERING

ALL ZONING AND HEIGHT DISTRICTS IN THE AFFECTED AREA REMAIN THE SAME. SUFFIX -WLD WAS ADDED BECAUSE THE AREA IS NOW INCLUDED IN THE WILDLIFE DISTRICT, CPC-2022-3413-CA. ALL BOUNDARIES FOLLOW CENTERLINES OF STREETS OR ALLEYS, EXCEPT WHERE NOTED OR DIMENSIONED.



Detail "C"

Sheet 4 of 12





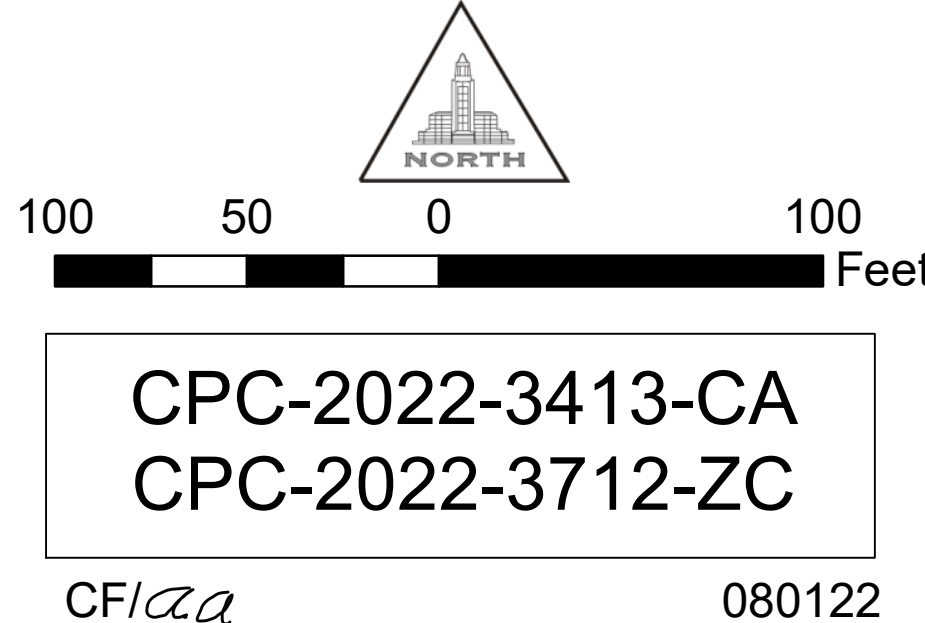


**Wildlife District "WLD"**

Wildlife District Boundary

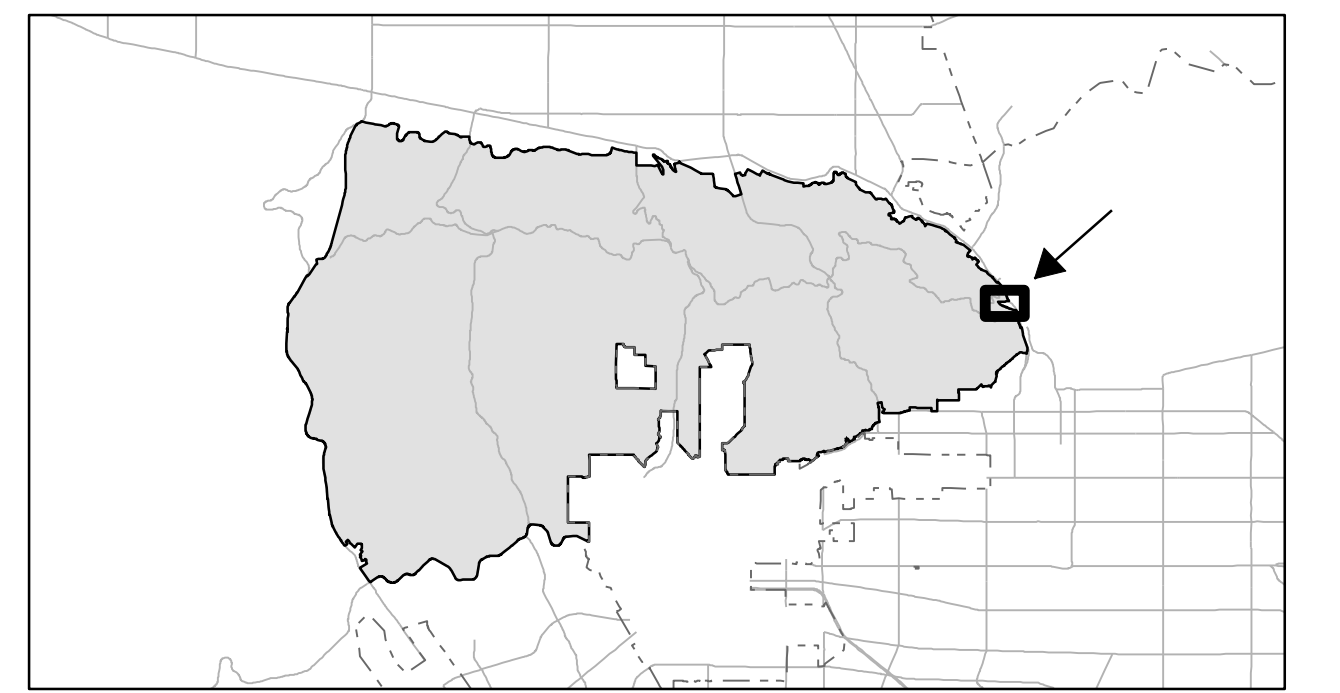
-WLD

ALL ZONING AND HEIGHT DISTRICTS IN THE AFFECTED AREA REMAIN THE SAME. SUFFIX **-WLD** WAS ADDED BECAUSE THE AREA IS NOW INCLUDED IN THE WILDLIFE DISTRICT, CPC-2022-3413-CA. ALL BOUNDARIES FOLLOW CENTERLINES OF STREETS OR ALLEYS, EXCEPT WHERE NOTED OR DIMENSIONED.

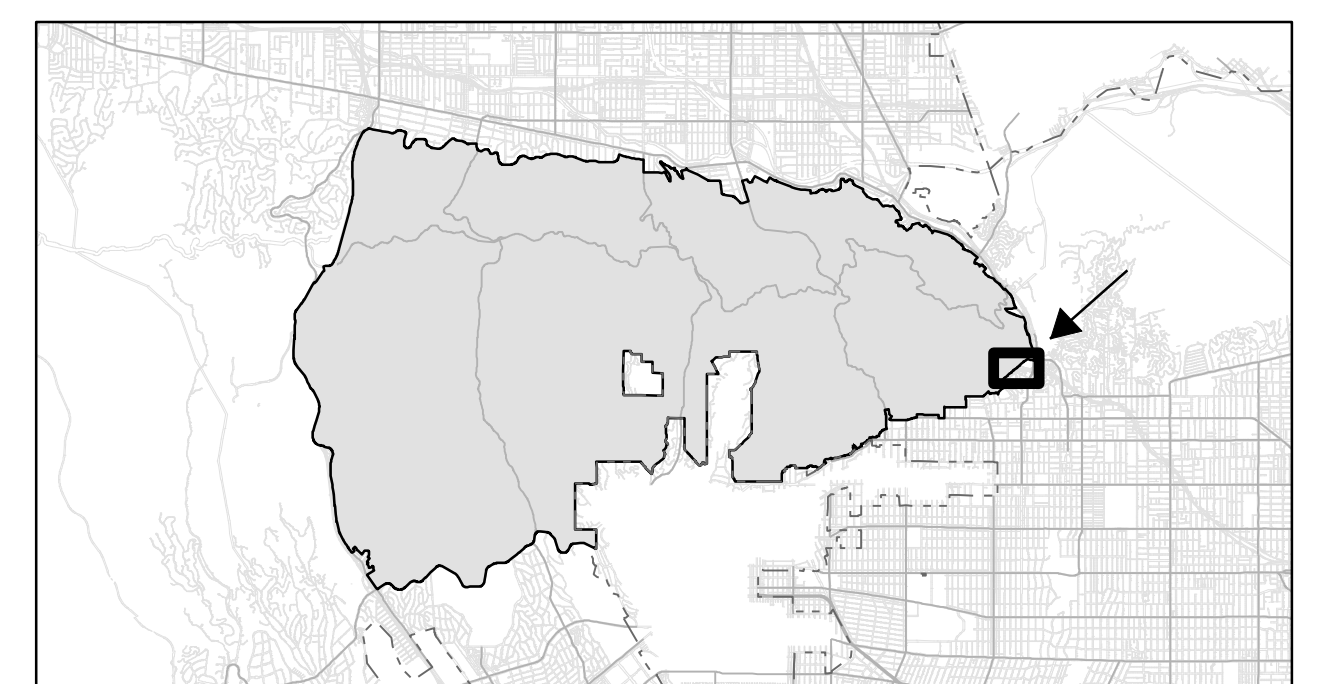


**Detail "D"**

Sheet  
5 of 12









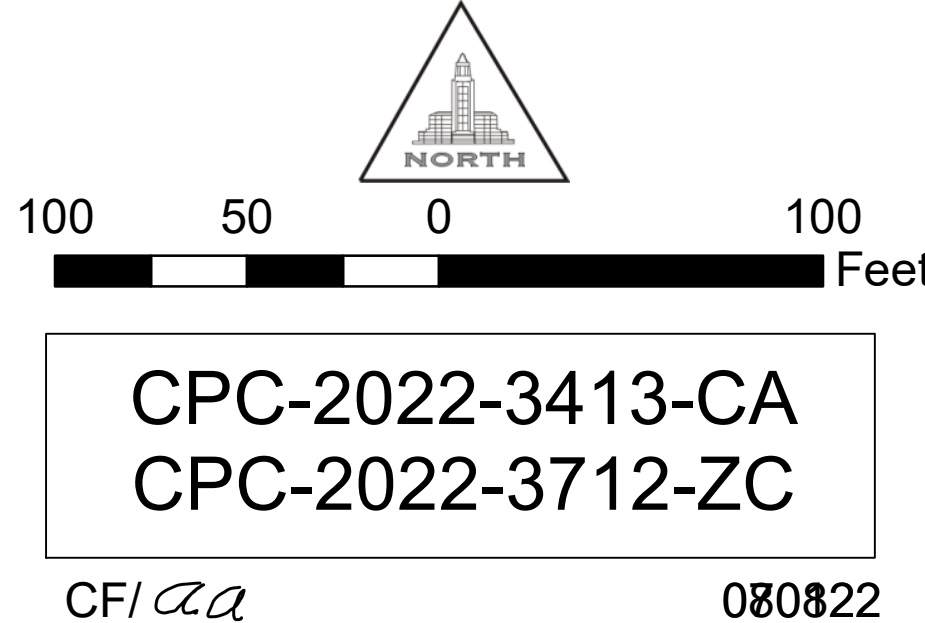


**Wildlife District "WLD"**

 Wildlife District Boundary

 -WLD

ALL ZONING AND HEIGHT DISTRICTS IN THE AFFECTED AREA REMAIN THE SAME. SUFFIX **-WLD** WAS ADDED BECAUSE THE AREA IS NOW INCLUDED IN THE WILDLIFE DISTRICT, CPC-2022-3413-CA. ALL BOUNDARIES FOLLOW CENTERLINES OF STREETS OR ALLEYS, EXCEPT WHERE NOTED OR DIMENSIONED.

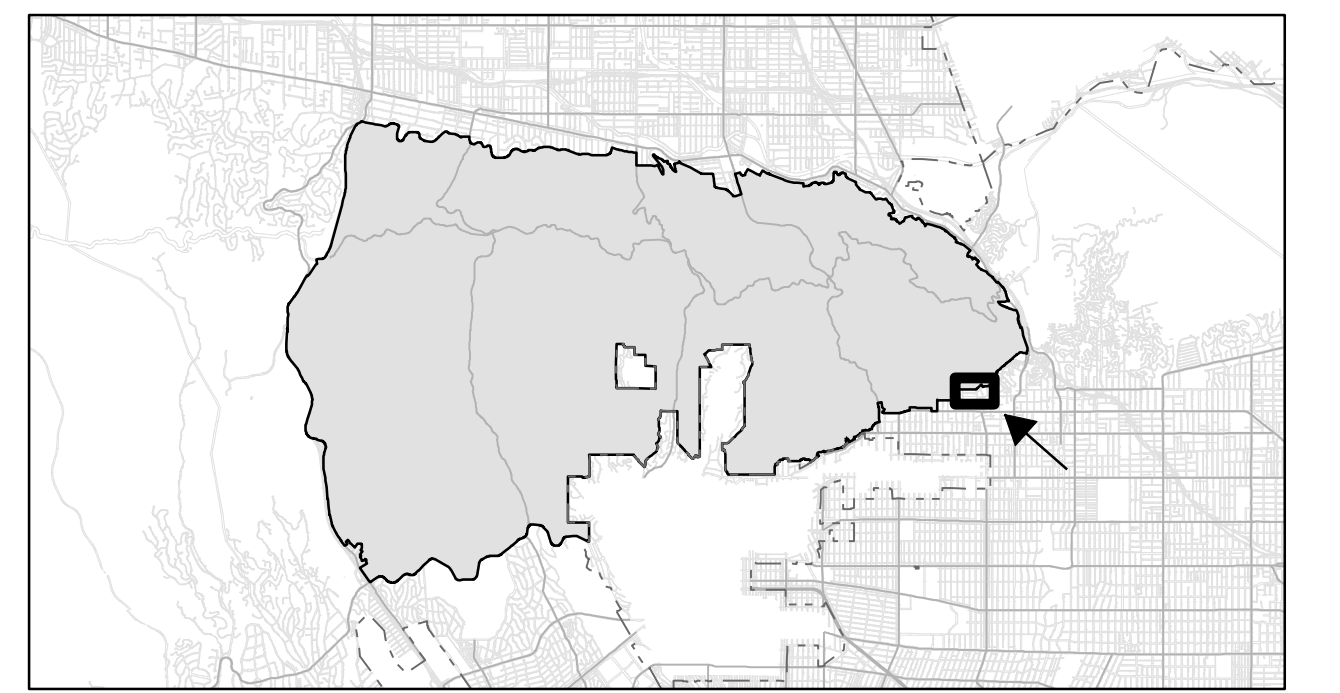


CPC-2022-3413-CA  
CPC-2022-3712-ZC

CFI/aa 080822

**Detail "F"**

Sheet  
7 of 12





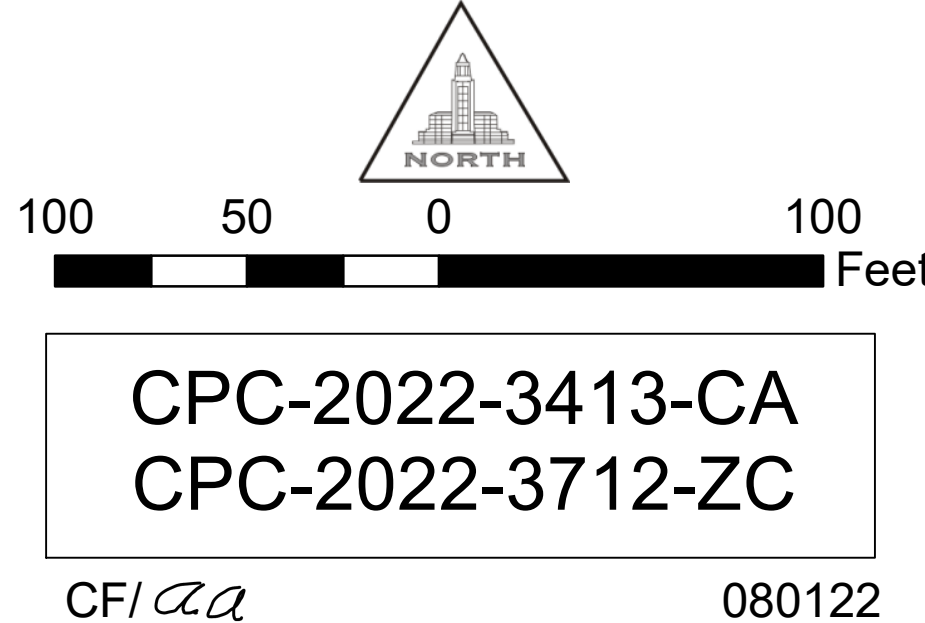


**Wildlife District "WLD"**

 Wildlife District Boundary

 -WLD

ALL ZONING AND HEIGHT DISTRICTS IN THE AFFECTED AREA REMAIN THE SAME. SUFFIX **-WLD** WAS ADDED BECAUSE THE AREA IS NOW INCLUDED IN THE WILDLIFE DISTRICT, CPC-2022-3413-CA. ALL BOUNDARIES FOLLOW CENTERLINES OF STREETS OR ALLEYS, EXCEPT WHERE NOTED OR DIMENSIONED.

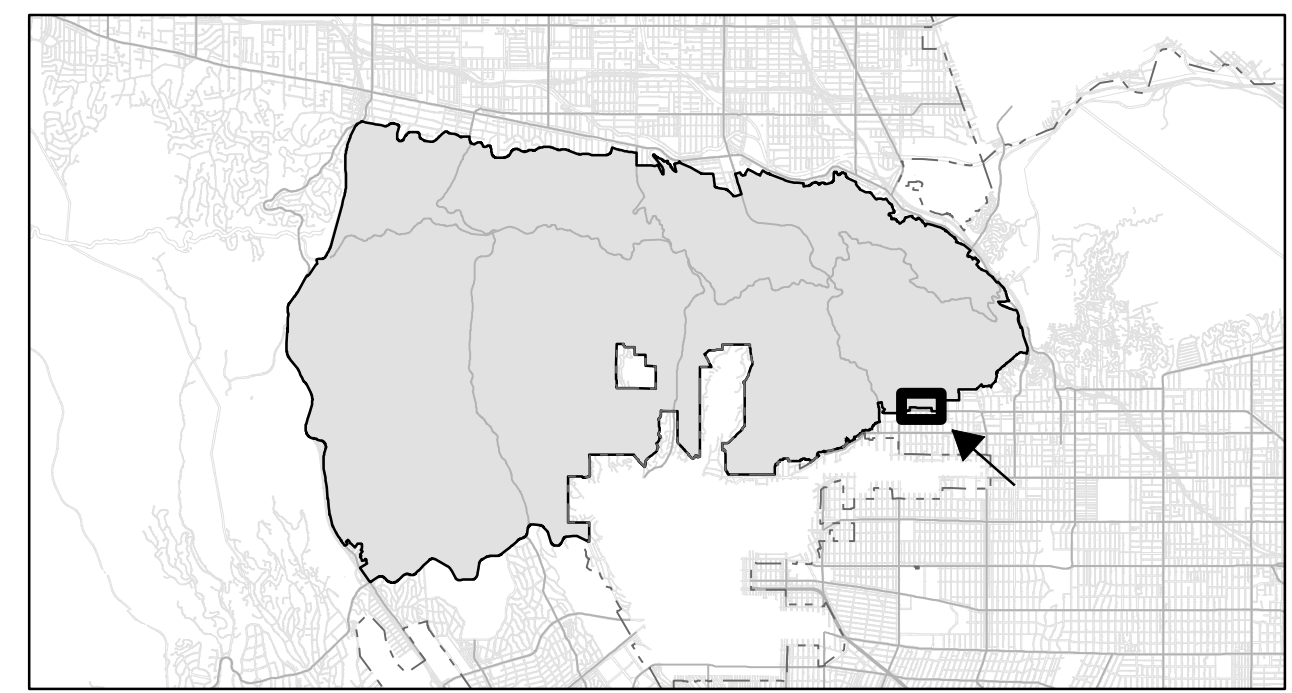


CPC-2022-3413-CA  
CPC-2022-3712-ZC

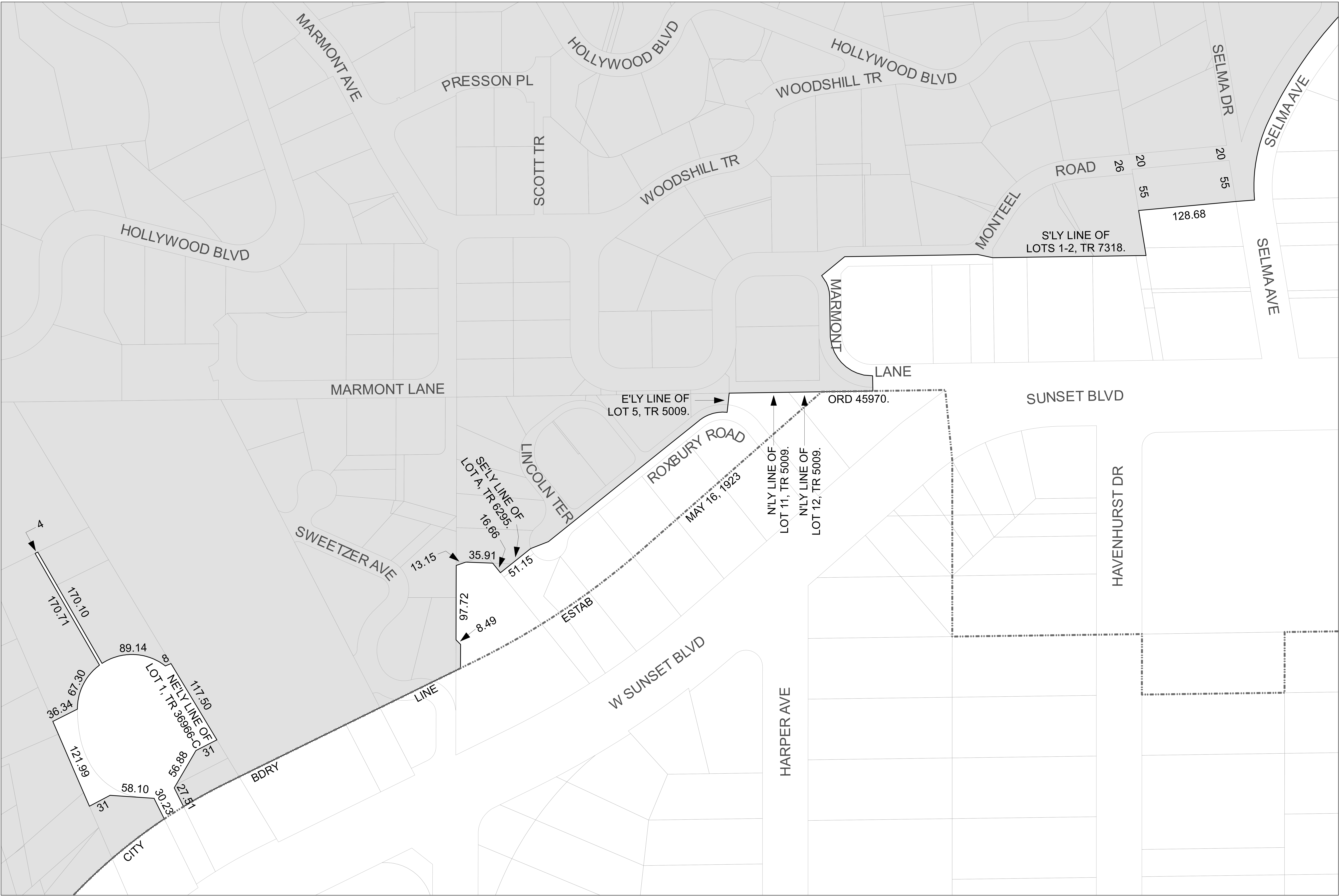
CFI/aa 080122

**Detail "G"**

Sheet  
8 of 12







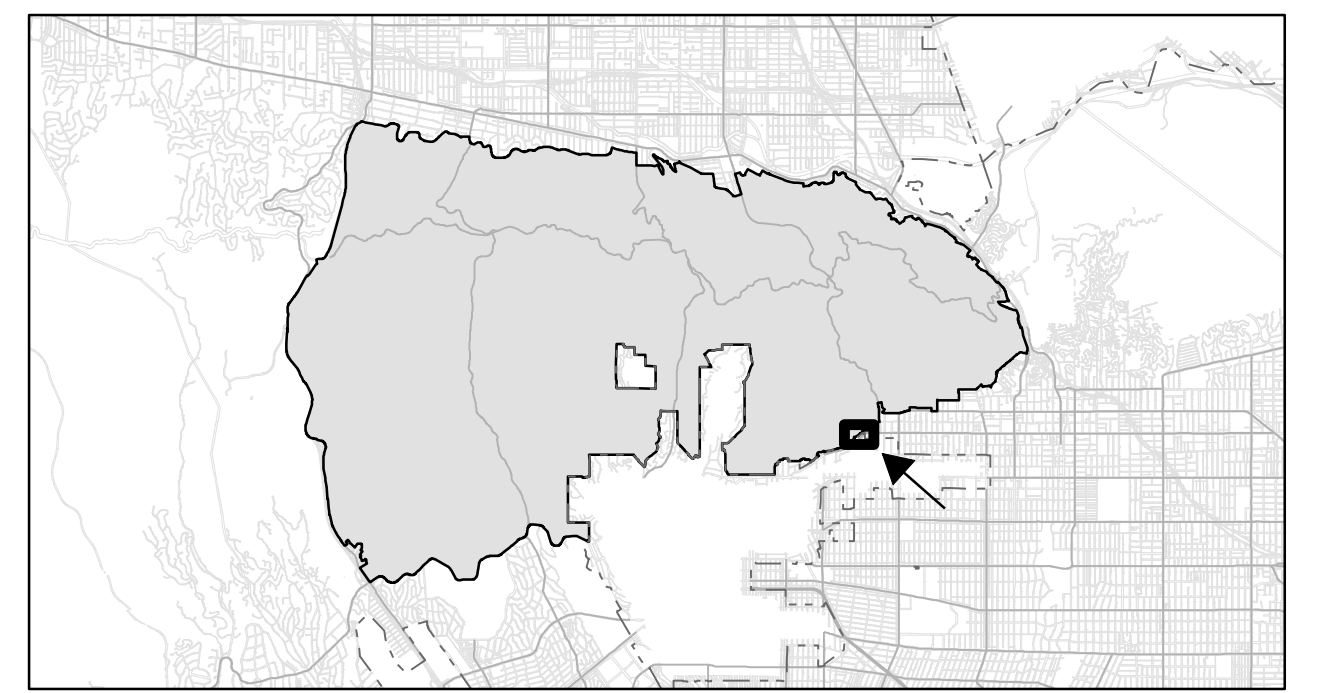
**Wildlife District "WLD"**  
 Wildlife District Boundary  
 -WLD

ALL ZONING AND HEIGHT DISTRICTS IN THE AFFECTED AREA REMAIN THE SAME. SUFFIX **-WLD** WAS ADDED BECAUSE THE AREA IS NOW INCLUDED IN THE WILDLIFE DISTRICT, CPC-2022-3413-CA. ALL BOUNDARIES FOLLOW CENTERLINES OF STREETS OR ALLEYS, EXCEPT WHERE NOTED OR DIMENSIONED.

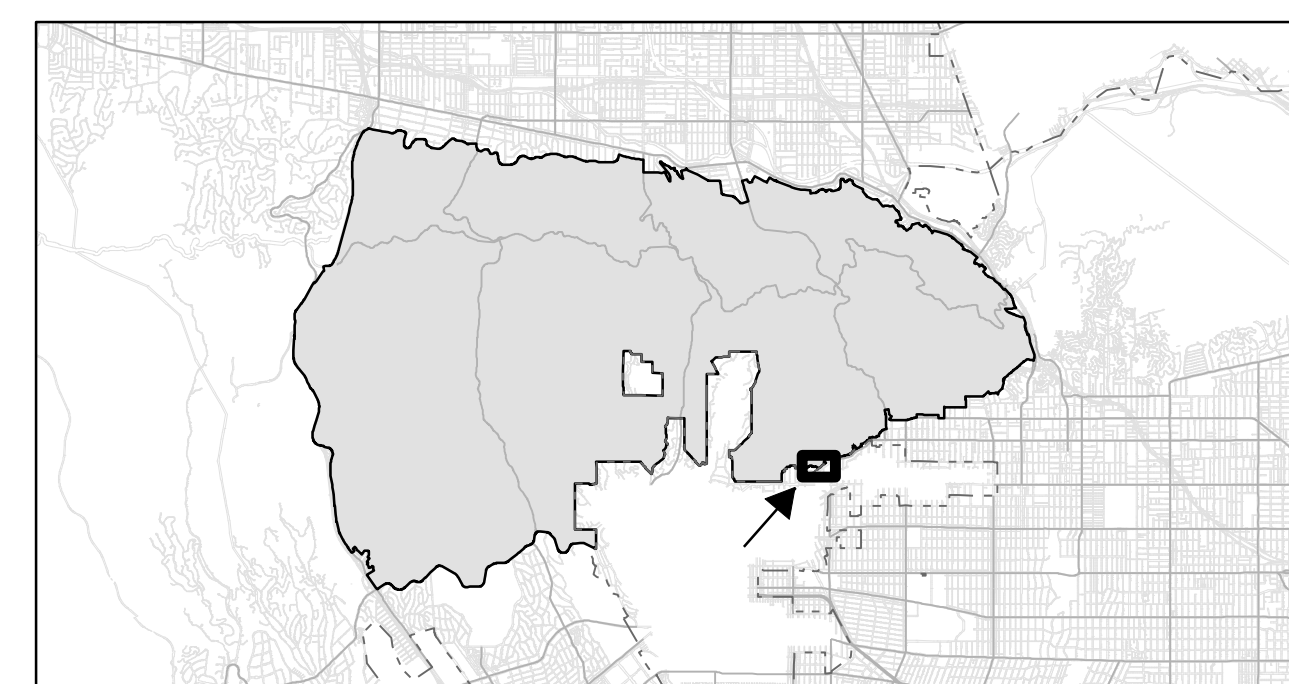


**Detail "H"**

Sheet  
9 of 12









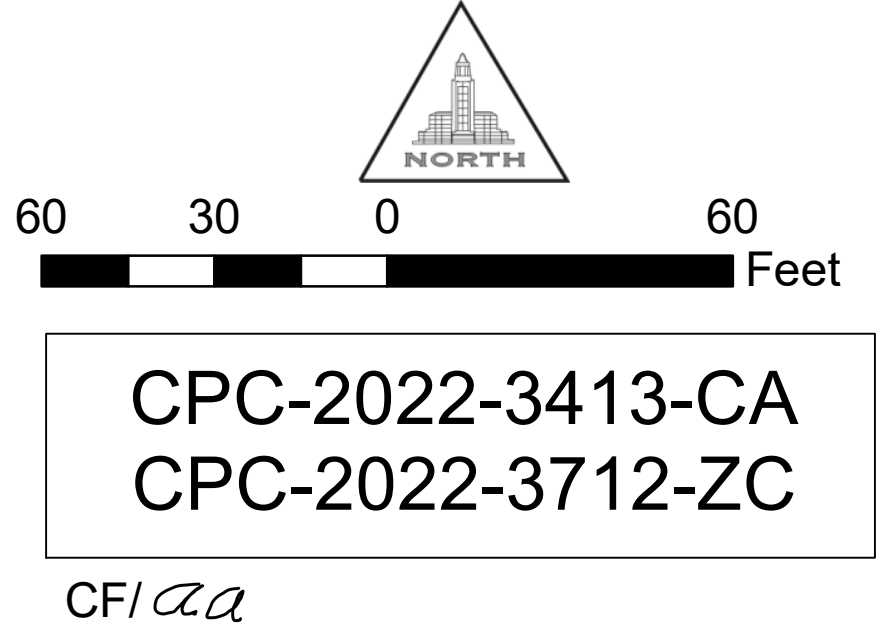


**Wildlife District "WLD"**

Wildlife District Boundary

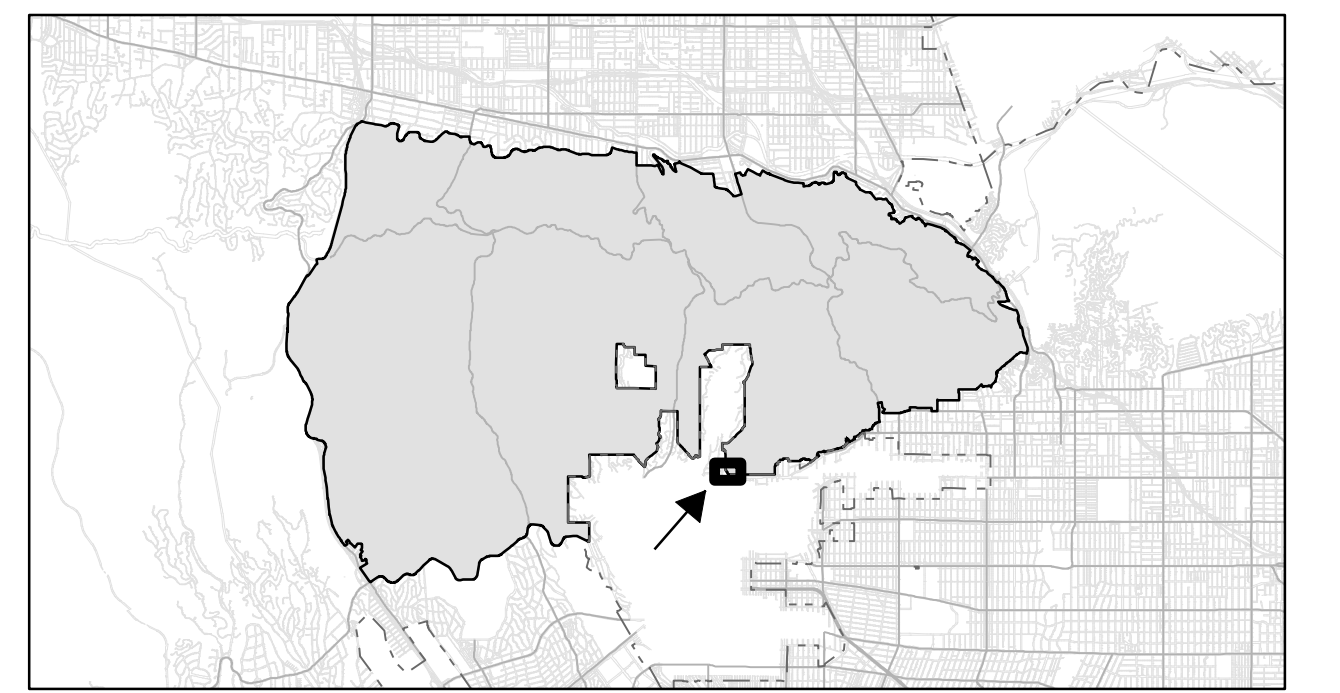
-WLD

ALL ZONING AND HEIGHT DISTRICTS IN THE AFFECTED AREA REMAIN THE SAME. SUFFIX **-WLD** WAS ADDED BECAUSE THE AREA IS NOW INCLUDED IN THE WILDLIFE DISTRICT, CPC-2022-3413-CA. ALL BOUNDARIES FOLLOW CENTERLINES OF STREETS OR ALLEYS, EXCEPT WHERE NOTED OR DIMENSIONED.

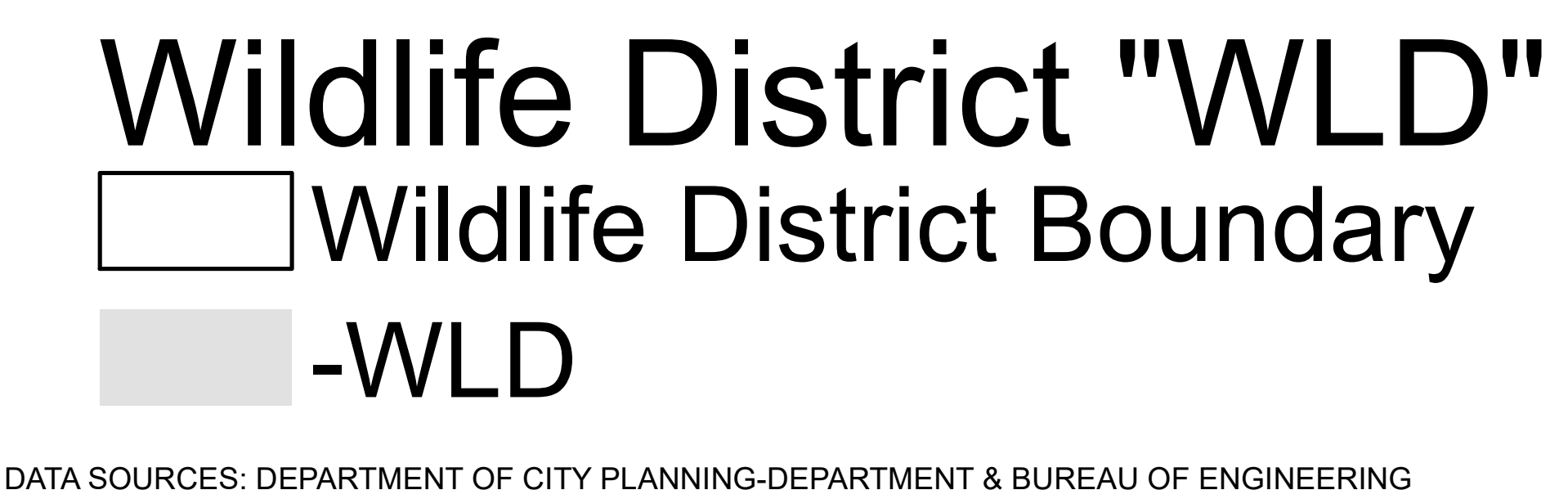


**Detail "J"**

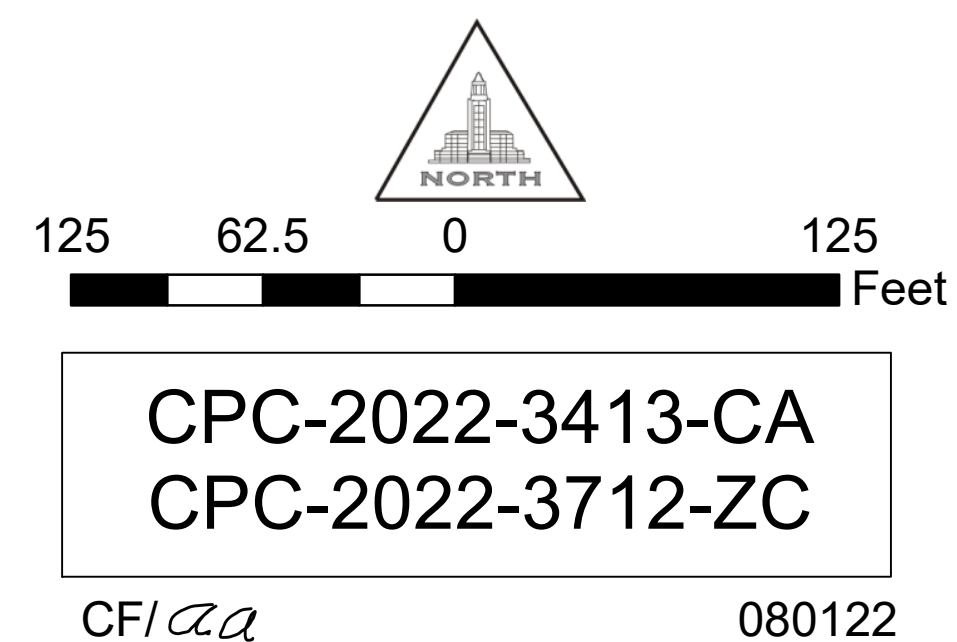
Sheet  
11 of 12





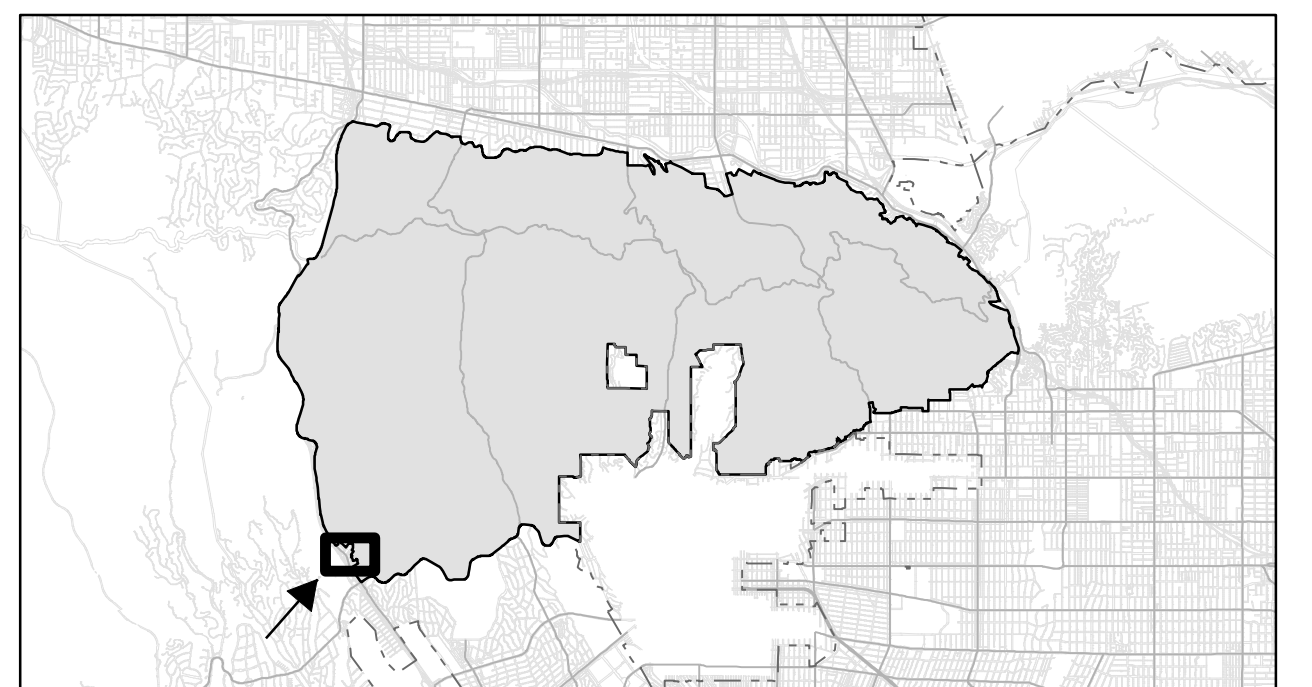


ALL ZONING AND HEIGHT DISTRICTS IN THE AFFECTED AREA REMAIN THE SAME. SUFFIX **-WLD** WAS ADDED BECAUSE THE AREA IS NOW INCLUDED IN THE WILDLIFE DISTRICT, CPC-2022-3413-CA. ALL BOUNDARIES FOLLOW CENTERLINES OF STREETS OR ALLEYS, EXCEPT WHERE NOTED OR DIMENSIONED.



## Detail "K"

Sheet  
12 of 12





**Sec. 4.** The City Clerk shall certify to the passage of this ordinance and have it published in accordance with Council policy, either in a daily newspaper circulated in the City of Los Angeles or by positing for ten days in three public places in the City of Los Angeles: one copy on the bulletin board located at the Main Street entrance to the Los Angeles City Hall; one copy on the bulletin board located at the Main Street entrance to the Los Angeles City Hall East; and one copy on the bulletin board located at the Temple Street entrance to the Los Angeles County Hall of Records.

Pursuant to Section 558 of the City Charter, the City Planning Commission on **December 8, 2022** recommends this ordinance **BE ADOPTED** by the City Council.

By *Cecilia Lamas* (Electronic Signature due to COVID-19)  
Cecilia Lamas  
Commission Executive Assistant

File No. \_\_\_\_\_

CITY CLERK

MAYOR

\_\_\_\_\_

\_\_\_\_\_

Ordinance Passed \_\_\_\_\_

Approved \_\_\_\_\_