

Your Community Impact Statement has been successfully submitted to City Council and Committees.

If you have questions and/or concerns, please contact the Department of Neighborhood Empowerment at NCsupport@lacity.org.

This is an automated response, please do not reply to this email.

Contact Information

Neighborhood Council: Bel Air-Beverly Crest Neighborhood Council

Name: Travis Longcore, Ph.D.

Phone Number: 310-247-9719

Email: tlongcore@babnc.org

The Board approved this CIS by a vote of: Yea(27) Nay(0) Abstain(0) Ineligible(0) Recusal(0)

Date of NC Board Action: 10/27/2021

Type of NC Board Action: For

Impact Information

Date: 10/31/2021

Update to a Previous Input: No

Directed To: City Council and Committees

Council File Number: 20-0668-S7

Agenda Date: 11/02/2021

Item Number: 46

Summary: The Bel Air-Beverly Crest Neighborhood Council participated extensively in the redistricting process as undertaken by the Los Angeles City Council Redistricting Commission. The Commission responded to testimony from BABNC regarding its community of interest and specifically on the proper location of the boundary between the two districts that are currently proposed to represent our territory (CD 5 and CD 2-or-4). BABNC strongly supports the recommended map from the Redistricting Commission and encourages the City Council not to change the treatment of the BABNC territory in any potential revisions.



October 31, 2021

Los Angeles City Council

Re: 20-0668-S7 Los Angeles City Council Redistricting Commission / City of Los Angeles / Council Districts / Recommended Map

Dear Councilmembers:

The Bel Air-Beverly Crest Neighborhood Council participated extensively in the redistricting process as undertaken by the Los Angeles City Council Redistricting Commission. The Commission responded to testimony from BABCNC regarding its community of interest and specifically on the proper location of the boundary between the two districts that are currently proposed to represent our territory (CD 5 and CD 2-or-4). BABCNC strongly supports the recommended map from the Redistricting Commission and encourages the City Council not to change the treatment of the BABNC territory in any potential revisions.

Our previous letters that were submitted to the Redistricting Commission are attached for your reference.

This position was adopted unanimously at Brown Act-noticed, regularly scheduled meeting of the Board on October 27, 2021, with 27 members present and voting.

Sincerely,

Travis Longcore, Ph.D., President
Bel Air-Beverly Crest Neighborhood Council

tlongcore@babenc.org

OFFICERS

President
Travis Longcore, Ph.D.
Vice President – Operations
Robin Greenberg
Vice President – Leg. Affairs
Jamie Hall
Secretary
Nicole Miner
Treasurer
Vadim Levotman

COMMITTEES/CHAIRS

Executive – **Travis Longcore, Ph.D.**
Planning and Land Use – **R. Schlesinger & S. Savage**
Bylaws, Rules and Elections – **Cathy Wayne**
Emergency Preparedness – **Vadim Levotman**
Outreach – **Robin Greenberg**
Traffic Committee – **Irene Sandler**
Public Works and Telecommunications –
Budget and Finance – **Nicole Miner**
Neighborhood Purpose Grant – **André Stojka**

STAKEHOLDER GROUPS

Bel Air Association
Bel-Air Crest Master Association
Bel Air Hills Association
Bel Air Ridge Association
Benedict Canyon Association
Casiano Estates Association
Doheny-Sunset Plaza Neighborhood Assn.
Holmby Hills Homeowners Association
Laurel Canyon Association
Residents of Beverly Glen

RESIDENTIAL DISTRICTS

Bel Air District
Bel Air Glen District
Franklin-Coldwater District
North of Sunset District

NON-RESIDENTIAL REPRESENTATION

At-Large Members
Commercial or Office Enterprise Districts
Custodians of Open Space
Faith-Based Institutions
Public Schools & Private Schools



September 14, 2021

VIA EMAIL: redistricting.lacity@lacity.org

City Council Redistricting Commission
City of Los Angeles
200 North Spring Street, Room 275
Los Angeles, California 90012

Re: Bel Air-Beverly Crest Neighborhood Council as a Community of Interest

Dear Chair Ali and Commissioners:

Bel Air-Beverly Crest Neighborhood Council (BABCNC) was established in 2002 and has for nearly 20 years served as the venue for coordination and cooperation across the community of interest that it serves. The BABCNC represents the hillside communities stretching from Laurel Canyon to Sepulveda Boulevard, and from Sunset Boulevard to Mulholland Drive. The BABCNC is currently represented by two City Council districts.

Our Redistricting Task Force has reviewed the census data and used the Districtr mapping tool to explore the possibilities for representing our neighborhood council area while achieving the legally mandated goals of the redistricting process. From this experience we have the following recommendations:

First, the 405 Freeway should represent a hard boundary for the western edge of Council District 5, all the way through the Sepulveda Pass to the southern extent. This natural break separates

OFFICERS

President
Travis Longcore
Vice President – Operations
Robin Greenberg
Vice President – Leg. Affairs
Jamie Hall
Secretary
Nicole Miner
Treasurer
Vadim Levotman

COMMITTEES/CHAIRS

Executive – **Travis Longcore**
Planning and Land Use – **R. Schlesinger & S. Savage**
Bylaws, Rules and Elections – **Cathy Wayne**
Emergency Preparedness –
Outreach – **Robin Greenberg**
Traffic Committee – **Irene Sandler**
Public Works and Telecommunications –
Budget and Finance – **Nicole Miner**
Neighborhood Purpose Grant – **André Stojka**

STAKEHOLDER GROUPS

Bel Air Association
Bel-Air Crest Master Association
Bel Air Hills Association
Bel Air Ridge Association
Benedict Canyon Association
Casiano Estates Association
Doheny-Sunset Plaza Neighborhood Assn.
Holmby Hills Homeowners Association
Laurel Canyon Association
Residents of Beverly Glen

RESIDENTIAL DISTRICTS

Bel Air District
Bel Air Glen District
Franklin-Coldwater District
North of Sunset District

NON-RESIDENTIAL REPRESENTATION

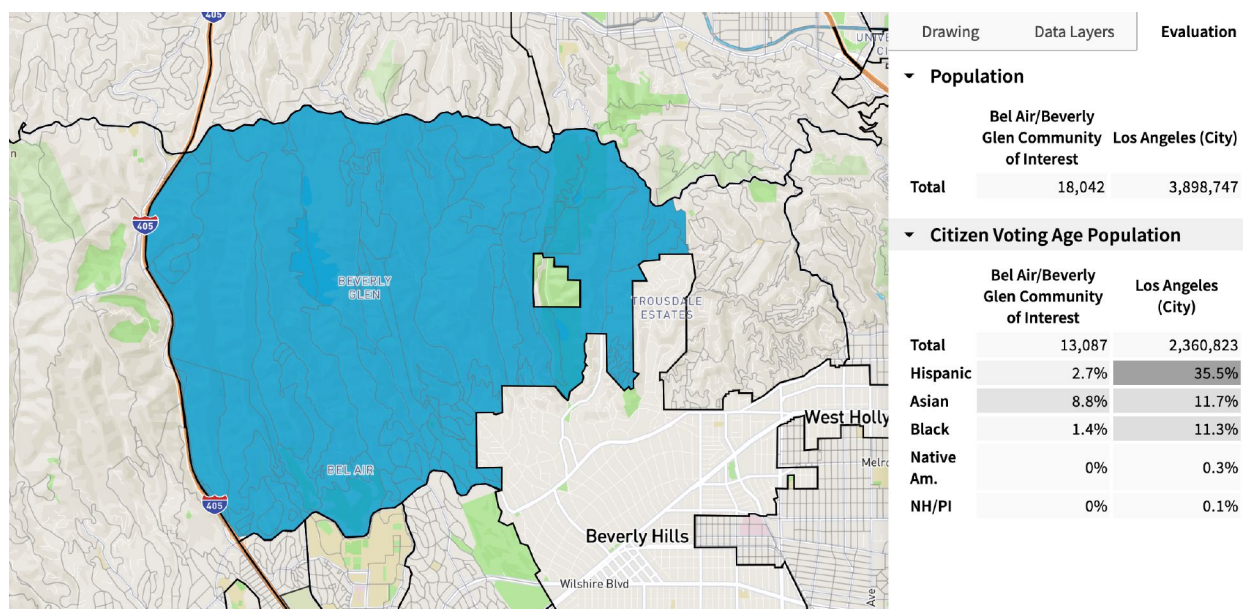
At-Large Members
Commercial or Office Enterprise Districts
Custodians of Open Space
Faith-Based Institutions
Public Schools & Private Schools

communities of interest, their orientation toward commercial districts and other important community features.

Second, our draft maps include two or more districts that extend from the San Fernando Valley through to the Westside because of the similarity of interests shared among hillside residents on either side of Mulholland Drive and extending down to the foothills on either side. We have mapped several alternatives that do this and it is feasible.

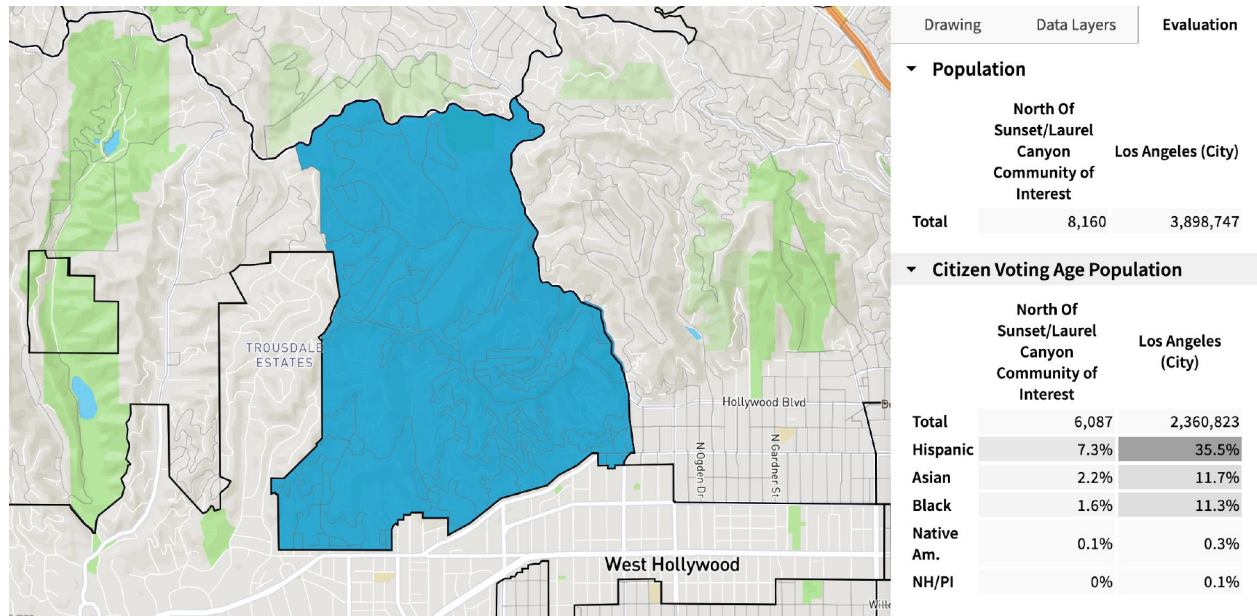
Third, our extensive discussions stimulated by the Districtr tool resulted in a consensus that the connection of the western portion of the BABCNC territory to the areas to the south (including Westwood, Century City, Beverlywood, Cheviot Hills) is most important to keep communities of interest (including the concentration of similar religious institutions and associated populations) together than it is for Laurel Canyon and North of Sunset neighborhoods to be kept in the same Council District as this western portion. Should BABCNC continue to be represented by two Council Districts, then Coldwater Canyon, Bowmont Drive, Hazen Drive, and Briarcrest Drive should be kept with the western portion of the territory (CD 5). This line is also used by the police department to separate its service areas.

We have developed sample maps that illustrate these principles. The two sub-communities within the BABCNC territory include Bel Air and Beverly Glen through Coldwater Canyon, as follows:



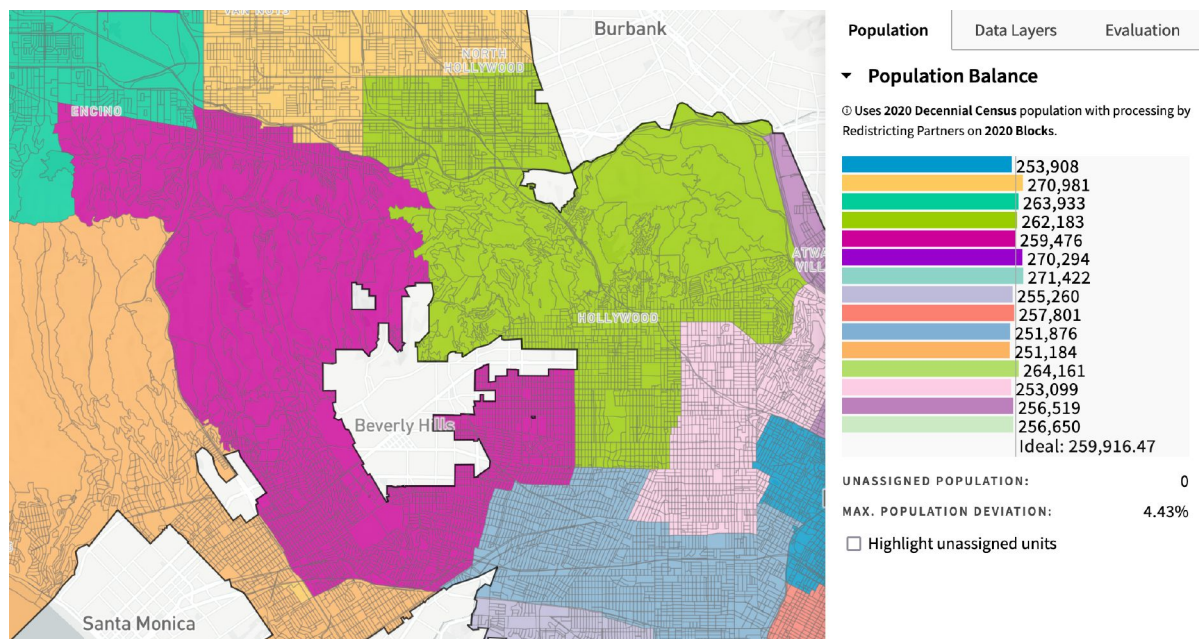
<https://districtr.org/COI/47000>

And then North of Sunset and Laurel Canyon:



<https://districtr.org/COI/47001>

These two parts of the BABCNC territory, if represented by two City Council districts in the redistricting, would join with similar communities contiguous with them. In this example, the BABCNC territory is represented by CD 4 in the east and CD 5 in the west, both of which include the similar hillside areas on the north and south slopes of the mountains.



<https://districtr.org/plan/47002>

Although we prepared a map for the entire city as a demonstration that this configuration is possible, we focus our recommendation on CD 4 and CD 5 and how the BABCNC territory could be integrated into those districts in a manner that keeps together our communities of interest.

This letter was approved by a 15-0 vote of the Bel Air-Beverly Crest Neighborhood Council at a special meeting, publicly noticed pursuant to the Brown Act, on September 14, 2021, with a quorum of 15 Board members present and voting.

Sincerely,

A handwritten signature in black ink, appearing to read "Travis Longcore", with a stylized flourish at the end.

Travis Longcore, Ph.D., President
Bel Air-Beverly Crest Neighborhood Council
tlongcore@babenc.org



July 29, 2021

VIA EMAIL: redistricting.lacity@lacity.org

City Council Redistricting Commission
City of Los Angeles
200 North Spring Street, Room 275
Los Angeles, California 90012

Re: Bel Air-Beverly Crest Neighborhood Council as a Community of Interest

Dear Chair Ali and Commissioners:

Bel Air-Beverly Crest Neighborhood Council (BABCNC) was established in 2002 and has for nearly 20 years served as the venue for coordination and cooperation across the community of interest that it serves. We represent the hillside communities stretching from Laurel Canyon to Sepulveda Boulevard, and from Sunset Boulevard to Mulholland Drive. Based on the review of our Task Force on Redistricting and approved by the Board of Directors, we offer this letter defining the BABCNC territory as a community of interest that should be kept undivided within a single council district that also includes the adjacent foothill commercial and cultural districts to the south.

The BABCNC territory is contiguous and has well-defined, natural boundaries. To the west, the boundary is the 405 Freeway through the Sepulveda Pass, which has presented a natural boundary for the entire period of human habitation of the Los Angeles Basin. Sepulveda Pass was used by the Spanish explorers to traverse the Santa Monica Mountains, who followed

OFFICERS

President
Travis Longcore, Ph.D.
Vice President – Operations
Robin Greenberg
Vice President – Leg. Affairs
Jamie Hall
Secretary
Nicole Miner
Treasurer
Vadim Levotman

COMMITTEES/CHAIRS

Executive – **Travis Longcore, Ph.D.**
Planning and Land Use – **R. Schlesinger & S. Savage**
Bylaws, Rules and Elections – **Cathy Wayne**
Emergency Preparedness –
Outreach – **Robin Greenberg**
Traffic Committee – **Irene Sandler**
Public Works and Telecommunications –
Budget and Finance – **Nicole Miner**
Neighborhood Purpose Grant – **André Stojka**

STAKEHOLDER GROUPS

Bel Air Association
Bel-Air Crest Master Association
Bel Air Hills Association
Bel Air Ridge Association
Benedict Canyon Association
Casiano Estates Association
Doheny-Sunset Plaza Neighborhood Assn.
Holmby Hills Homeowners Association
Laurel Canyon Association
Residents of Beverly Glen

RESIDENTIAL DISTRICTS

Bel Air District
Bel Air Glen District
Franklin-Coldwater District
North of Sunset District

NON-RESIDENTIAL REPRESENTATION

At-Large Members
Commercial or Office Enterprise Districts
Custodians of Open Space
Faith-Based Institutions
Public Schools & Private Schools

Re: Bel Air-Beverly Crest Neighborhood Council as a Community of Interest

pathways laid down by thousands of years of Chumash and Tongva travel through their lands. In the modern era it has become a barrier to east-west movement, as the traffic associated with crossing the 405 Freeway results in people avoiding activities that involve crossing this barrier.

To the north, our boundary is Mulholland Drive, which is close to the crest of the Santa Monica Mountains as it extends east to west. It too is a natural boundary, demarcating watersheds and associated environmental connectivity (lands north of Mulholland drain through the San Fernando Valley via the Los Angeles River to the ocean in Long Beach, while our territory to the south of Mulholland drains into Ballona Creek and to the ocean in Playa Del Rey). Cultural identity shifts north and south of Mulholland Drive as well, with areas to the north associating with the San Fernando Valley and its services and political identity, and our territory to the south associated with the Westside, its commercial districts and cultural institutions, and political organization, such as being a member of the Westside Regional Alliance of Councils.

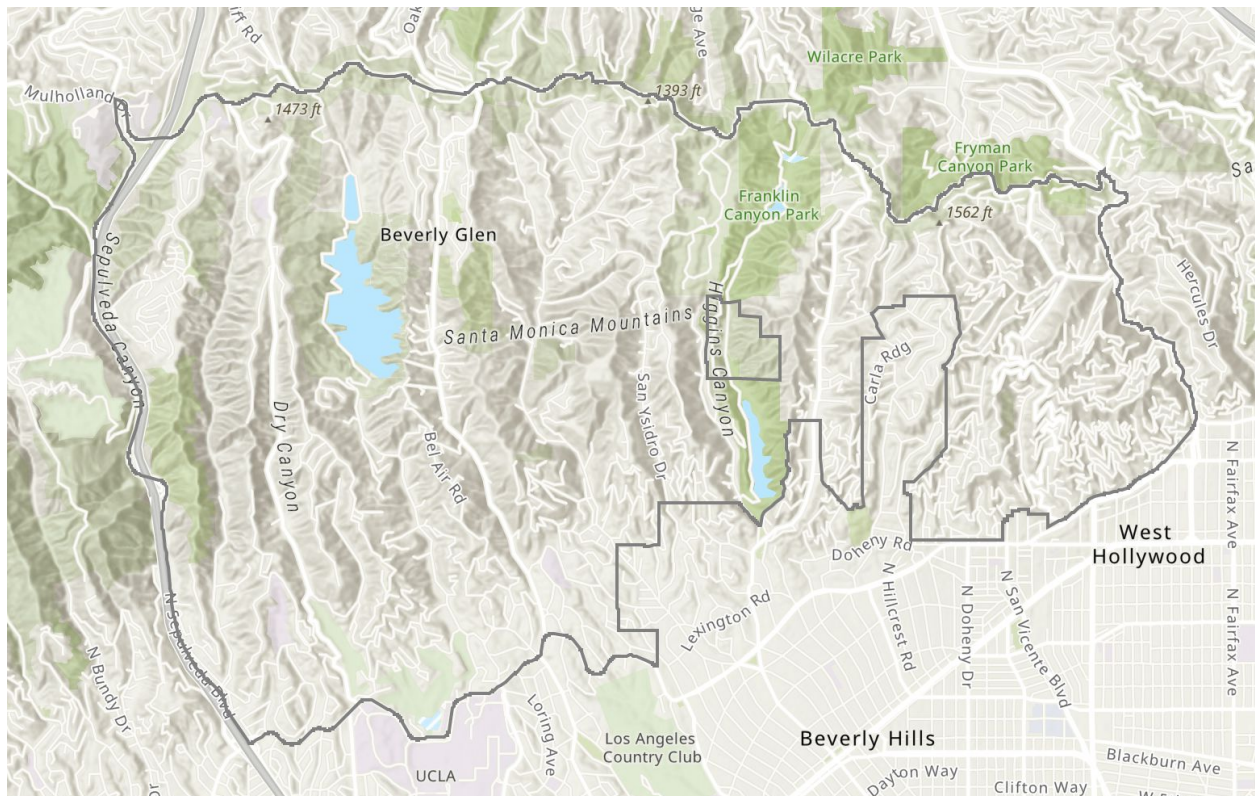


Figure 1. Location of the Bel Air-Beverly Crest Neighborhood Council on the Westside of Los Angeles. The official City of Los Angeles boundary shown here should be updated so that the western boundary is the 405 Freeway instead of Sepulveda Boulevard.

Our southern boundary is Sunset Boulevard, which is another old pathway across the Los Angeles basin. It was one of the first routes from downtown Los Angeles to the ocean, following the break point between the steep hillsides of the Santa Monica Mountains and the more rolling

foothills that would become Westwood, the “flats” of Beverly Hills, and West Hollywood. In fact our southern extent is further defined by these other two cities encompassed by Los Angeles.

The eastern boundary of this community of interest is Laurel Canyon Boulevard. Laurel Canyon is the breakpoint between the hillside areas that orient toward the west and those that orient more explicitly toward Hollywood. The identity of areas further east is more as the Hollywood Hills and indeed this is reflected in the adjacent neighborhood council - Hollywood Hills West.

The identity and interests of the Bel Air-Beverly Crest neighborhood is defined by the opportunities and challenges of hillside living. Most residents are attracted to the lower density, views, and access to natural lands and wildlife that are typical of the hillside. Indeed, a large amount of protected open space for wildlife is found in this area and these areas are used by residents for recreation (e.g., Franklin Canyon Park, Beverly Glen Park, Getty View Park) or appreciated as visual resources without access (Stone Canyon Reservoir and Watershed). Many neighborhoods include privately owned natural open space as well.

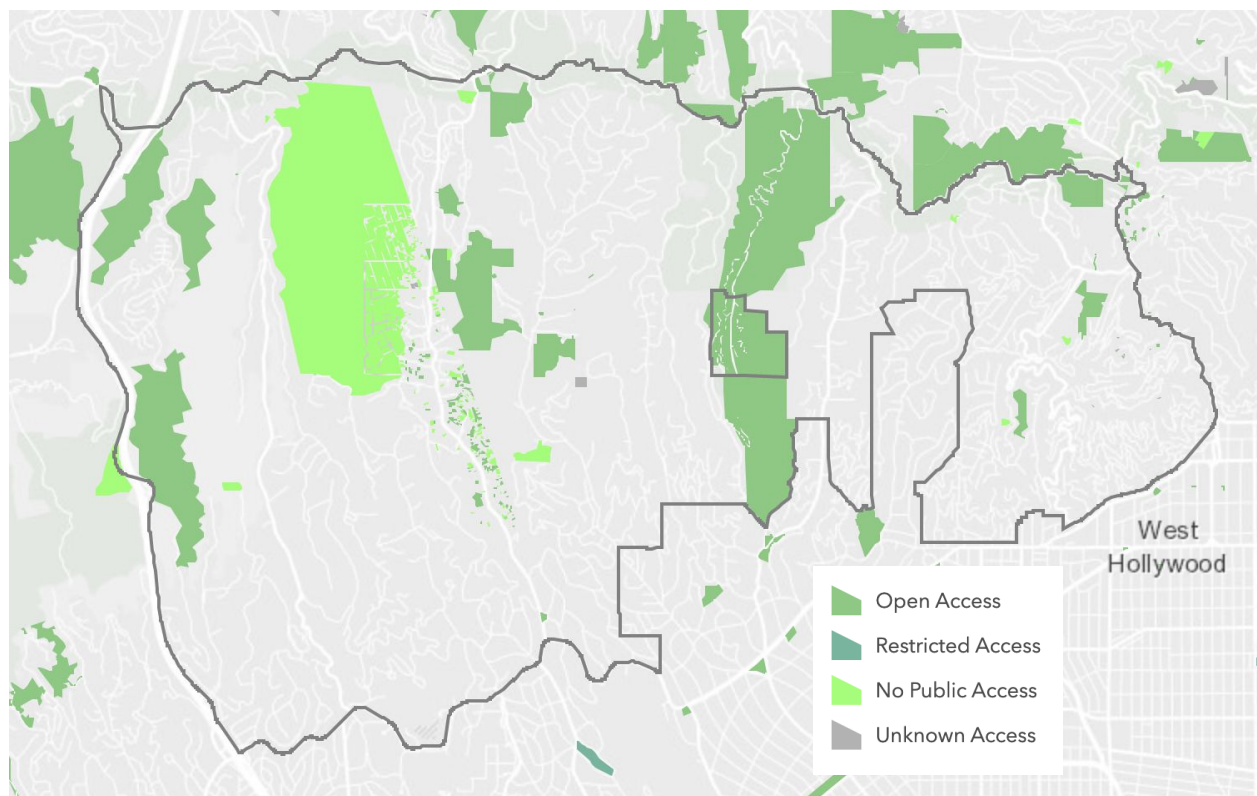


Figure 2. Distribution of publicly owned open spaces within the Bel Air-Beverly Crest Neighborhood Council territory.

All areas within this territory face an ongoing risk from wildfire. This risk brings neighborhoods together to plan and watch out for risks. For example, the BABCNC Emergency Preparedness Committee networks with residents across the territory and a network of ham radio operators is

Re: Bel Air-Beverly Crest Neighborhood Council as a Community of Interest

set up to maintain communications in case of emergency. Residents are responsible for annual fuel modification and live through the long fire season prepared to evacuate at a moment's notice.

The neighborhood is unified by its neighborhoods being accessed by the four major Westside to Valley boulevards: Sepulveda, Beverly Glen, Coldwater Canyon, and Laurel Canyon. These routes both bring convenience to access different parts of the city, but also challenges associated with extreme traffic during rush hours and street racing during nighttime hours. Similar traffic issues are experienced by those canyon roads that do not extend through to the Valley, such as Benedict Canyon and Roscomare Canyon.

Residents appreciate the beautiful setting and views, but this also makes this neighborhood vulnerable to unscrupulous owners who rent out homes for parties and disruptive short-term tenants. Party houses are a concern throughout the territory, so much so that BABCNC has established an Ad Hoc Committee to focus on these nuisances and the means available to control them.

Hillside development is a similar challenge that requires representation by a councilmember dedicated to addressing neighborhood concerns. Narrow streets, fire danger, substandard lots, and extreme topography make development difficult and often dangerous for neighbors. Establishing an appropriate size, location, schedule, and characteristics of development is a concern for current residents, both to maintain the environment and to ensure safety in event of emergencies.

The neighborhoods of the BABCNC territory come together over these issues of common interest, such as attending town halls on fire safety and post-fire responses, meeting each other at pancake breakfasts at the fire stations that serve the territory, at the community police advisory boards, and at local neighborhood fairs and festivals.

Notwithstanding the unique character of our neighborhoods, BABCNC makes up a community of interest that deserves representation by a single council office that will recognize and appreciate the area's assets and opportunities. It is for these reasons that we request that our territory remain undivided and be included in the council district that includes the westside communities adjacent to the south (e.g., Westwood, Century City, Fairfax, Cheviot Hills, Rancho Park).

Re: Bel Air-Beverly Crest Neighborhood Council as a Community of Interest

This letter was approved by a unanimous vote of the Bel Air-Beverly Crest Neighborhood Council at a regular meeting, publicly noticed pursuant to the Brown Act, on July 29, 2021, with a quorum of 28 Board members present and voting.

Sincerely,

A handwritten signature in black ink, appearing to read "Travis Longcore", with a stylized flourish at the end.

Travis Longcore, Ph.D., President
Bel Air-Beverly Crest Neighborhood Council
tlongcore@babenc.org