

BOARD OF PUBLIC WORKS  
MEMBERS

GREG GOOD  
PRESIDENT

AURA GARCIA  
VICE PRESIDENT

DR. MICHAEL R. DAVIS  
PRESIDENT PRO TEMPORE

JESSICA CALOZA  
COMMISSIONER

M. TERESA VILLEGAS  
COMMISSIONER

CITY OF LOS ANGELES

CALIFORNIA



ERIC GARCETTI  
MAYOR

OFFICE OF THE  
BOARD OF PUBLIC WORKS

DR. FERNANDO CAMPOS  
EXECUTIVE OFFICER

200 NORTH SPRING STREET  
ROOM 361, CITY HALL  
LOS ANGELES, CA 90012

TEL: (213) 978-0261  
TDD: (213) 978-2310  
FAX: (213) 978-0278

<http://bpw.lacity.org>

July 23, 2021

**Council Hearing – 8/3/2021**  
**Council File No. 21-0900-S24**

City Council  
Room No. 395  
City Hall

Honorable Members:

**ASSESSMENT HEARING #9 – EAGLE DRIVE AVENUE AND WEST BROADWAY**

Following a hearing before the Board of Public Works at which protests were received and considered regarding the assessments in connection with the maintenance for Eagle Drive Avenue and West Broadway – Street Lighting Maintenance Assessment District, the Board of Public Works recommends that the assessments therefore be confirmed.

Sincerely,

DR. FERNANDO CAMPOS,  
Executive Officer, Board of Public Works

FC:LC

CC: Director, Bureau of Street Lighting



DEPARTMENT OF PUBLIC WORKS  
BUREAU OF STREET LIGHTING

DATE                   MAR 24 2021

C.D. 14

Honorable City Council  
of the City of Los Angeles

**EAGLE DALE AVENUE AND WEST BROADWAY  
STREET LIGHTING MAINTENANCE ASSESSMENT DISTRICT**

---

This report submits the proposed Ordinance of Intention to institute maintenance assessment proceedings for the above street lighting project.

**RECOMMENDATIONS**

1. Council adopt this report and the Ordinance of Intention, and that the proceedings be conducted in accordance with Sections 6.95 - 6.127 of the Los Angeles Administrative Code, Section 53753 of the California Government Code, and Proposition 218 (Articles XIII C and XIII D of the California Constitution). This includes Council holding a Public Hearing for the proposed District Diagram with City page number 15535.
2. Upon Council adoption of the Ordinance of Intention, the Bureau of Street Lighting be instructed to: Mail notices of the assessment ballot proceedings, and Mail assessment ballots (as required by Prop. 218) to the property owners in the lighting district.
3. Upon completion of Item 2 above, the City Clerk be instructed to conduct the assessment ballot proceedings (i.e. count, certify, and report the results of the assessment ballot proceedings to the Council).
4. Following the conclusion of the final public hearing, if a project has weighted "YES" votes equal to, or in excess of weighted "NO" votes, the Council shall deny the appeals, confirm the maintenance assessments, and adopt the Final Ordinance levying the assessments. If the weighted "NO" votes are in excess of weighted "YES" votes, Council will abandon the lighting district and proceedings in accordance with Proposition 218; and the affected street lighting system shall be removed from service or not be constructed.
5. A copy of this report be provided to each affected Council office and the Mayor's Office of Economic Development.

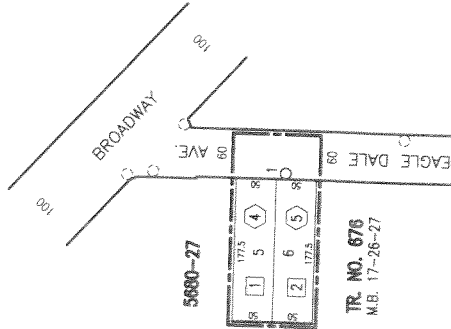
**LAND USE METHOD**



SCALE  
1" = 100'

PRIOR TO THE FOLLOWING DATES, THE LISTED PARCELS WERE ASSESSED UNDER THE REFERENCE NUMBERS AS SHOWN:

DATE	PARCEL NO.	PREVIOUS REFERENCE NO.	DIST.	PAGE	PARCEL



TR. NO. 676  
M.B. 17-26-27

COUNCIL DISTRICT NO. 14  
PROJECT ID NO. 5247

C.M.B.	Page(s)
5680	27

DISTRICT OUTLINED BY *H. J. Morrison*  
 DISTRICT CHECKED BY *Ruben I. Ramirez*  
 APPROVED *February 17, 2021*

Kenneth R. Marino, Jr., Assistant Director  
 Bureau of Street Lighting  
 By *Ruben I. Ramirez*  
 Engineer

In Serv.	Date	By	D.M.	182017
Drawn	Date	By	D.L.	182017
	1-1-21	J.A.		
	1-21-21	J.A.		

Sheet No.  
15535  
1 of 1

**EAGLE DALE AVE. & WEST BROADWAY L.D.**

- (1) Indicates L.A. County APN
- (2) Indicates L.A. City Assessment Number
- (3) Indicates New Electroliner
- (4) Indicates New Electroliner
- (5) Indicates New Electroliner
- (6) Indicates New Electroliner
- (7) Indicates New Electroliner
- (8) Indicates New Electroliner
- (9) Indicates New Electroliner
- (10) Indicates New Electroliner
- (11) Indicates New Electroliner
- (12) Indicates New Electroliner
- (13) Indicates New Electroliner
- (14) Indicates New Electroliner
- (15) Indicates New Electroliner
- (16) Indicates New Electroliner
- (17) Indicates New Electroliner
- (18) Indicates New Electroliner
- (19) Indicates New Electroliner
- (20) Indicates New Electroliner
- (21) Indicates New Electroliner
- (22) Indicates New Electroliner
- (23) Indicates New Electroliner
- (24) Indicates New Electroliner
- (25) Indicates New Electroliner
- (26) Indicates New Electroliner
- (27) Indicates New Electroliner
- (28) Indicates New Electroliner
- (29) Indicates New Electroliner
- (30) Indicates New Electroliner
- (31) Indicates New Electroliner
- (32) Indicates New Electroliner
- (33) Indicates New Electroliner
- (34) Indicates New Electroliner
- (35) Indicates New Electroliner
- (36) Indicates New Electroliner
- (37) Indicates New Electroliner
- (38) Indicates New Electroliner
- (39) Indicates New Electroliner
- (40) Indicates New Electroliner
- (41) Indicates New Electroliner
- (42) Indicates New Electroliner
- (43) Indicates New Electroliner
- (44) Indicates New Electroliner
- (45) Indicates New Electroliner
- (46) Indicates New Electroliner
- (47) Indicates New Electroliner
- (48) Indicates New Electroliner
- (49) Indicates New Electroliner
- (50) Indicates New Electroliner
- (51) Indicates New Electroliner
- (52) Indicates New Electroliner
- (53) Indicates New Electroliner
- (54) Indicates New Electroliner
- (55) Indicates New Electroliner
- (56) Indicates New Electroliner
- (57) Indicates New Electroliner
- (58) Indicates New Electroliner
- (59) Indicates New Electroliner
- (60) Indicates New Electroliner
- (61) Indicates New Electroliner
- (62) Indicates New Electroliner
- (63) Indicates New Electroliner
- (64) Indicates New Electroliner
- (65) Indicates New Electroliner
- (66) Indicates New Electroliner
- (67) Indicates New Electroliner
- (68) Indicates New Electroliner
- (69) Indicates New Electroliner
- (70) Indicates New Electroliner
- (71) Indicates New Electroliner
- (72) Indicates New Electroliner
- (73) Indicates New Electroliner
- (74) Indicates New Electroliner
- (75) Indicates New Electroliner
- (76) Indicates New Electroliner
- (77) Indicates New Electroliner
- (78) Indicates New Electroliner
- (79) Indicates New Electroliner
- (80) Indicates New Electroliner
- (81) Indicates New Electroliner
- (82) Indicates New Electroliner
- (83) Indicates New Electroliner
- (84) Indicates New Electroliner
- (85) Indicates New Electroliner
- (86) Indicates New Electroliner
- (87) Indicates New Electroliner
- (88) Indicates New Electroliner
- (89) Indicates New Electroliner
- (90) Indicates New Electroliner
- (91) Indicates New Electroliner
- (92) Indicates New Electroliner
- (93) Indicates New Electroliner
- (94) Indicates New Electroliner
- (95) Indicates New Electroliner
- (96) Indicates New Electroliner
- (97) Indicates New Electroliner
- (98) Indicates New Electroliner
- (99) Indicates New Electroliner
- (100) Indicates New Electroliner

MAINTENANCE ASSESSMENT DIAGRAM FOR PROPOSITION 218 REQUIREMENTS SHOWING LOCATION OF ELECTROLINERS AND THE EXTENT OF THE TERRITORY INCLUDED WITHIN THE ASSESSMENT DISTRICT

FOR THE FURNISHING OF ELECTRIC ENERGY & MAINTENANCE FOR THE LIGHTING OF SAID DISTRICT IN THE CITY OF LOS ANGELES

KENNETH R. MARINO, JR., ASSISTANT DIRECTOR - BUREAU OF STREET LIGHTING THE OUTSIDE BOUNDARIES OF THE ASSESSMENT DISTRICT ARE SHOWN

NEW BOUNDARY

Order	Revision Description	Date	By

1:\PROJECTS\CAD\enr\csl\182017 drawings\sheet\2021-02-17-15535.dwg