

BOARD OF PUBLIC WORKS
MEMBERS

GREG GOOD
PRESIDENT

AURA GARCIA
VICE PRESIDENT

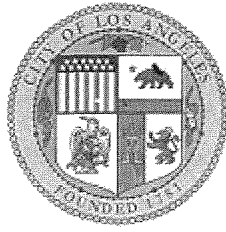
DR. MICHAEL R. DAVIS
PRESIDENT PRO TEMPORE

JESSICA CALOZA
COMMISSIONER

M. TERESA VILLEGAS
COMMISSIONER

CITY OF LOS ANGELES

CALIFORNIA



ERIC GARCETTI
MAYOR

OFFICE OF THE
BOARD OF PUBLIC WORKS

DR. FERNANDO CAMPOS
EXECUTIVE OFFICER

200 NORTH SPRING STREET
ROOM 361, CITY HALL
LOS ANGELES, CA 90012

TEL: (213) 978-0261
TDD: (213) 978-2310
FAX: (213) 978-0278

<http://bpw.lacity.org>

July 23, 2021

Council Hearing – 8/3/2021
Council File No. 21-0900-S17

City Council
Room No. 395
City Hall

Honorable Members:

ASSESSMENT HEARING #3 – BEVERLY BOULEVARD AND BONNIE BRAE STREET

Following a hearing before the Board of Public Works at which protests were received and considered regarding the assessments in connection with the maintenance for Beverly Boulevard and Bonnie Brae Street – Street Lighting Maintenance Assessment District, the Board of Public Works recommends that the assessments therefore be confirmed.

Sincerely,

DR. FERNANDO CAMPOS,
Executive Officer, Board of Public Works

FC:LC

CC: Director, Bureau of Street Lighting



DEPARTMENT OF PUBLIC WORKS
BUREAU OF STREET LIGHTING

DATE MAR 17 2021

C.D. 13

Honorable City Council
of the City of Los Angeles

**BEVERLY BOULEVARD AND BONNIE BRAE STREET
STREET LIGHTING MAINTENANCE ASSESSMENT DISTRICT**

This report submits the proposed Ordinance of Intention to institute maintenance assessment proceedings for the above street lighting project.

RECOMMENDATIONS

1. Council adopt this report and the Ordinance of Intention, and that the proceedings be conducted in accordance with Sections 6.95 - 6.127 of the Los Angeles Administrative Code, Section 53753 of the California Government Code, and Proposition 218 (Articles XIII C and XIII D of the California Constitution). This includes Council holding a Public Hearing for the proposed District Diagram with City page numbers 15550.
2. Upon Council adoption of the Ordinance of Intention, the Bureau of Street Lighting be instructed to: Mail notices of the assessment ballot proceedings, and Mail assessment ballots (as required by Prop. 218) to the property owners in the lighting district.
3. Upon completion of Item 2 above, the City Clerk be instructed to conduct the assessment ballot proceedings (i.e. count, certify, and report the results of the assessment ballot proceedings to the Council).
4. Following the conclusion of the final public hearing, if a project has weighted "YES" votes equal to, or in excess of weighted "NO" votes, the Council shall deny the appeals, confirm the maintenance assessments, and adopt the Final Ordinance levying the assessments. If the weighted "NO" votes are in excess of weighted "YES" votes, Council will abandon the lighting district and proceedings in accordance with Proposition 218; and the affected street lighting system shall be removed from service or not be constructed.
5. A copy of this report be provided to each affected Council office and the Mayor's Office of Economic Development.

The passage of Proposition 218 on November 5, 1996, requires a vote of the property owners prior to Council confirming and levying the assessments for maintenance. Upon adoption of the transmitted Ordinance of Intention, the Council shall set a date for hearing appeals and the last day to receive completed assessment ballots. A hearing to be held by the Board of Public Works will be scheduled at least one week prior to the date of the public hearing for the City Council to review and resolve any appeals concerning the proposed maintenance assessments – as specified in the Engineer’s Report. If the assessment ballot proceeding as required by Proposition 218 approves these assessments, the City Council may confirm and levy the assessments. If levied, the administration of this district may be combined with that of another district or districts in the future as provided in the Ordinance of Intention. Protests that are received, as described in the Administrative Code, are for the consideration of the Council, but are not binding. Only a weighted majority vote against the assessment is binding.

The assessments to be levied to pay for the cost and expenses of the work or improvements in the proposed BEVERLY BOULEVARD AND BONNIE BRAE STREET Street Lighting Maintenance Assessment District (or Sidewalk Maintenance Assessment District) fall within the (e)7 exemption of Prop 26. As set forth in the accompanying Ordinance of Intention, said assessments will be imposed in accordance with the provisions of Article XIID of the California Constitution.

In accordance with Council Policy adopted on December 11, 1998, the Bureau of Street Lighting will cast ballots in favor of the assessments for all Council controlled public properties in the district.

SUMMARY

TOTAL STREETLIGHTS:	6
AFFECTED PARCELS:	3
TOTAL ASSESSMENTS:	\$ 3,420.82
TAX YEAR:	2021/2022
TYPE OF PROJECT:	PROPOSED PRIVATE DEVELOPMENT PROJECT

TRANSMITTALS

1. Ordinance of Intention, approved as to form and legality by the City Attorney, for the proposed assessment district.
2. Engineer’s Report as required by Proposition 218.
3. Proposed assessment roll.
4. Diagram delineating those lands proposed to be assessed.

Report prepared by:
Assessment Engineering Division
Proposition 218 Compliance Section
S. Jew, Civil Engineering Associate II
Ruben Flamenco, P.E., Division Manager

Respectfully submitted,

Ruben Flamenco For
Miguel Sangalang, Int. Executive Director
Bureau of Street Lighting

SJ (L:\SPROP218\Council Report\CR - Beverly & Bonnie Brae (SJ).doc)

LAND USE METHOD



SCALE
1" = 100'

REFER TO THE FOLLOWING DATES, THE LISTED PARCELS WERE ASSESSED UNDER THE REFERENCE PARCEL NO. SHOWN

PARCEL NO.	PREVIOUS REFERENCE DIST.	PAGE	PARCEL

COUNTY REGISTER NO. 13
PARCEL NO. 5153

5153	1
5154	1, 2
S.M.B.	Page(s)

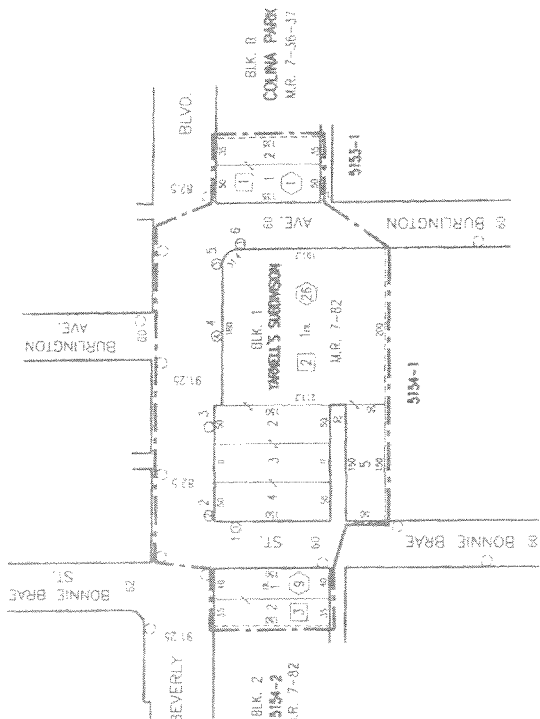
DISTRICT SUBMITTED BY: *S. Ruben F. Flamme*
SUBJECT: *MAINTENANCE FOR BEVERLY BLVD. & BONNIE BRAE ST.*

APPROVAL: *MARC 17 7 2021*

Keyney & Waibel, Jr. Assistant Director
Bureau of Street Lighting

by *S. Ruben F. Flamme*
Date *1/17/2021*

Drawn by *SC*
Checked by *SC*
Title *Plan*
Drawing Code *BR004335*
Scale *1" = 100'*
Sheet No. *15550* of *1*



- ① Indicates LA County APN
- ② Indicates LA City Assessor's Number
- ③ Indicates New Electrical, 02 9995 W/6 LA 2008 10
- ④ Indicates New Electrical, 03 9330 W/6 LA 2008 10
- ⑤ Indicates New Electrical, 04 9995 W/6 LA 2008 10
- ⑥ Indicates New Electrical, 05 9995 W/6 LA 2008 10
- ⑦ Indicates New Electrical, 06 9995 W/6 LA 2008 10
- ⑧ Indicates New Electrical, 07 9995 W/6 LA 2008 10
- ⑨ Indicates New Electrical, 08 9995 W/6 LA 2008 10
- ⑩ Indicates New Electrical, 09 9995 W/6 LA 2008 10
- ⑪ Indicates New Electrical, 10 9995 W/6 LA 2008 10
- ⑫ Indicates New Electrical, 11 9995 W/6 LA 2008 10
- ⑬ Indicates New Electrical, 12 9995 W/6 LA 2008 10
- ⑭ Indicates New Electrical, 13 9995 W/6 LA 2008 10
- ⑮ Indicates New Electrical, 14 9995 W/6 LA 2008 10
- ⑯ Indicates New Electrical, 15 9995 W/6 LA 2008 10
- ⑰ Indicates New Electrical, 16 9995 W/6 LA 2008 10
- ⑱ Indicates New Electrical, 17 9995 W/6 LA 2008 10
- ⑲ Indicates New Electrical, 18 9995 W/6 LA 2008 10
- ⑳ Indicates New Electrical, 19 9995 W/6 LA 2008 10
- ㉑ Indicates New Electrical, 20 9995 W/6 LA 2008 10
- ㉒ Indicates New Electrical, 21 9995 W/6 LA 2008 10
- ㉓ Indicates New Electrical, 22 9995 W/6 LA 2008 10
- ㉔ Indicates New Electrical, 23 9995 W/6 LA 2008 10
- ㉕ Indicates New Electrical, 24 9995 W/6 LA 2008 10
- ㉖ Indicates New Electrical, 25 9995 W/6 LA 2008 10
- ㉗ Indicates New Electrical, 26 9995 W/6 LA 2008 10
- ㉘ Indicates New Electrical, 27 9995 W/6 LA 2008 10
- ㉙ Indicates New Electrical, 28 9995 W/6 LA 2008 10
- ㉚ Indicates New Electrical, 29 9995 W/6 LA 2008 10
- ㉛ Indicates New Electrical, 30 9995 W/6 LA 2008 10

MAINTENANCE ASSESSMENT DIAGRAM
FOR PROPOSITION 218 REQUIREMENTS
SHOWING LOCATION OF ELECTRODES AND THE
STREET OF THE TERRITORY INCLUDED WITHIN THE
ASSESSMENT DISTRICT

FOR THE FURNISHING OF ELECTRIC ENERGY & MAINTENANCE EXP
THE LIGHTING DISTRICT IN THE CITY OF LOS ANGELES

KEYNEY & WAIHEL, JR., ASSISTANT DIRECTOR - BUREAU OF STREET LIGHTING
THE CHIEF ENGINEER OF THE DISTRICT OF THE DISTRICT OF THE DISTRICT

NEW BOUNDARY

BEVERLY BLVD. & BONNIE BRAE ST. AVE. L.D.