

BOARD OF PUBLIC WORKS
MEMBERS

GREG GOOD
PRESIDENT

AURA GARCIA
VICE PRESIDENT

DR. MICHAEL R. DAVIS
PRESIDENT PRO TEMPORE

JESSICA CALOZA
COMMISSIONER

M. TERESA VILLEGAS
COMMISSIONER

CITY OF LOS ANGELES

CALIFORNIA



ERIC GARCETTI
MAYOR

OFFICE OF THE
BOARD OF PUBLIC WORKS

DR. FERNANDO CAMPOS
EXECUTIVE OFFICER

200 NORTH SPRING STREET
ROOM 361, CITY HALL
LOS ANGELES, CA 90012

TEL: (213) 978-0261
TDD: (213) 978-2310
FAX: (213) 978-0278

<http://bpw.lacity.org>

July 23, 2021

**Council Hearing – 8/3/2021
Council File No. 21-0900-S20**

City Council
Room No. 395
City Hall

Honorable Members:

ASSESSMENT HEARING #5 – AMBOY AVENUE AND PENDLETON STREET

Following a hearing before the Board of Public Works at which protests were received and considered regarding the assessments in connection with the maintenance for Amboy Avenue and Pendleton Street – Street Lighting Maintenance Assessment District, the Board of Public Works recommends that the assessments therefore be confirmed.

Sincerely,

DR. FERNANDO CAMPOS,
Executive Officer, Board of Public Works

FC:LC

CC: Director, Bureau of Street Lighting

DATE APR 07 2021

C.D. 6

Honorable City Council
of the City of Los Angeles

**AMBOY AVENUE AND PENDLETON STREET
STREET LIGHTING MAINTENANCE ASSESSMENT DISTRICT**

This report submits the proposed Ordinance of Intention to institute maintenance assessment proceedings for the above street lighting project.

RECOMMENDATIONS

1. Council adopt this report and the Ordinance of Intention, and that the proceedings be conducted in accordance with Sections 6.95 - 6.127 of the Los Angeles Administrative Code, Section 53753 of the California Government Code, and Proposition 218 (Articles XIII C and XIII D of the California Constitution). This includes Council holding a Public Hearing for the proposed District Diagram with City page numbers 15476 thru 15478.
2. Upon Council adoption of the Ordinance of Intention, the Bureau of Street Lighting be instructed to: Mail notices of the assessment ballot proceedings, and Mail assessment ballots (as required by Prop. 218) to the property owners in the lighting district.
3. Upon completion of Item 2 above, the City Clerk be instructed to conduct the assessment ballot proceedings (i.e. count, certify, and report the results of the assessment ballot proceedings to the Council).
4. Following the conclusion of the final public hearing, if a project has weighted "YES" votes equal to, or in excess of weighted "NO" votes, the Council shall deny the appeals, confirm the maintenance assessments, and adopt the Final Ordinance levying the assessments. If the weighted "NO" votes are in excess of weighted "YES" votes, Council will abandon the lighting district and proceedings in accordance with Proposition 218; and the affected street lighting system shall be removed from service or not be constructed.
5. A copy of this report be provided to each affected Council office and the Mayor's Office of Economic Development.

LAND USE METHOD



SCALE
1" = 100'

PRIOR TO THE FOLLOWING DATES, THE LISTED PARCELS WERE ASSESSED UNDER THE REFERENCE NUMBERS AS SHOWN:

DATE _____ PARCEL NO. _____ PREVIOUS REFERENCE DIST. PAGE PARCEL

COUNCIL DISTRICT NO.	6	2633	10,11,12,16,17
PROJECT ID NO.	5190	2633	18,19,22,33,34
		2633	35,36,37,38
C.M.B.			Page(s)

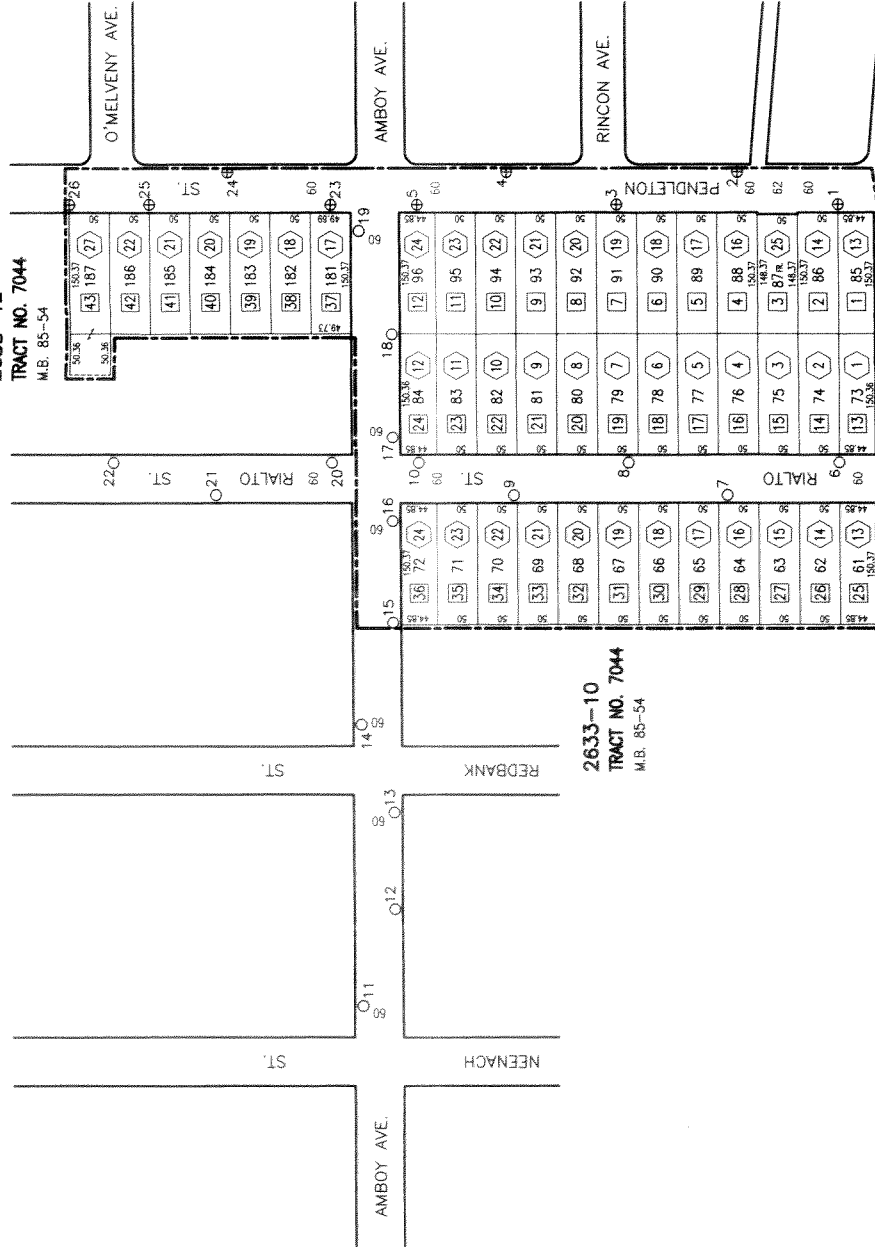
DISTRICT OUTLINED BY *Sam J. ...*
 DISTRICT CHECKED BY *Rubén F. Flamenco*
 APPROVED **December 23, 2020**
 Kenney R. Marine, Jr., Assistant Director
 Bureau of Street Lighting

By *Rubén F. Flamenco*
 Engineer

In. Serv.	Date	by	D.M.	1928	1928	1928	1928	1928	1928
Drawn	10-5-20	L.D.	W.O.						
Checked	12-23-20	L.F.	L.F.	L2019757					
Thomas Guide Page	410	532	Grid	16,20					

Sheet No. **15476** of **3**
 Page **1** of **3**

2633-12
 TRACT NO. 7044
 M.B. 85-54



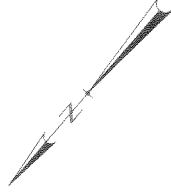
2633-10
 TRACT NO. 7044
 M.B. 85-54

2633-11
 TRACT NO. 7044
 M.B. 85-54

- ① Indicates L.A. County APN
- ② Indicates L.A. City Assessment Number
- ③ Indicates New Equipment
- ④ Indicates New Electroliner
- ⑤ Indicates Future Electroliner
- ⑥ Indicates Adjacent System

MAINTENANCE ASSESSMENT DIAGRAM
 FOR PROPOSITION 218 REQUIREMENTS
 SHOWING LOCATION OF ELECTROLINERS AND THE
 EXTENT OF THE TERRITORY INCLUDED WITHIN THE
 ASSESSMENT DISTRICT
 FOR THE PURSUITING OF ELECTRIC ENERGY & MAINTENANCE FOR
 THE LIGHTING OF SAID DISTRICT IN THE CITY OF LOS ANGELES
 KENNEY R. MARINE, JR., ASSISTANT DIRECTOR - BUREAU OF STREET LIGHTING
 THE EXTERIOR BOUNDARIES OF THE ASSESSMENT DISTRICT ARE SHOWN
 NEW BOUNDARY

LAND USE METHOD



SCALE
1" = 100'

