

Los Angeles City Council Homelessness and Poverty Committee

June 10, 2021



**PAT BROWN INSTITUTE
FOR PUBLIC AFFAIRS**
Unleashing the Power of Participation

Raphael J. Sonenshein, Ph.D.

Executive Director

raphael.sonenshein@calstatela.edu



Miguel Santana

Committee Chair

msantana@weingartfnd.org

Current Governance Structure

City of Los Angeles

Mayor, City Council CAO

City
Departments

LA City
Homelessness
Initiative

HHH
Administrative
Oversight
Committee

HHH Citizen
Oversight
Committee

LAHSA

Coordinated Entry System (CES) Policy Council

LAHSA Governing
Board

LA County and LA City
Continuum
of Care (CoC) Board

LAHSA

Lived
Experiences
Advisory
Board

LA Regional
Homelessness
Council

Ad Hoc
Committee for
Black People
Experiencing
Homelessness

Ad Hoc
Governance
Committee

County of Los Angeles

Board of Supervisors

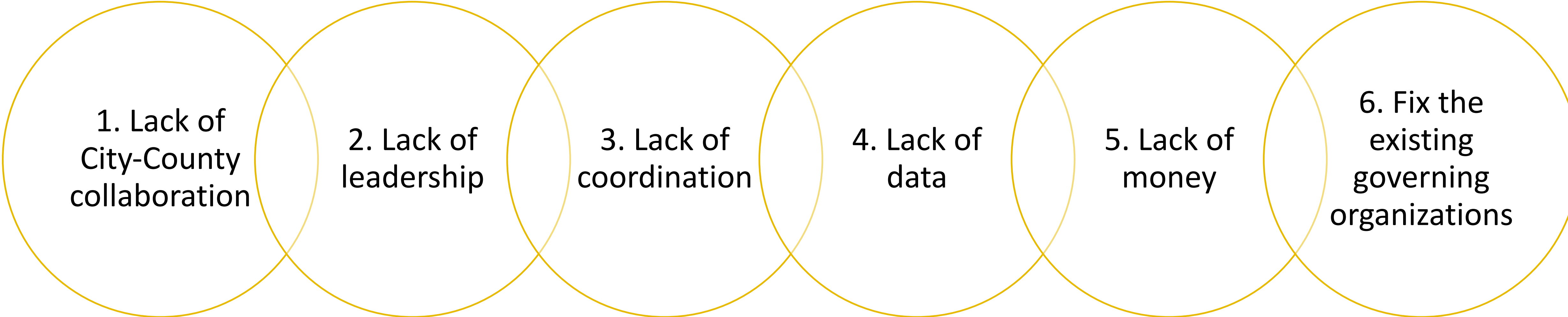
CEO

County
Departments

LA County
Homelessness
Initiative

Measure H
Citizen
Oversight
Advisory Board

Question Everything: Assumptions About The Problem



1. Lack of
City-County
collaboration

2. Lack of
leadership

3. Lack of
coordination

4. Lack of
data

5. Lack of
money

6. Fix the
existing
governing
organizations

The Actual Governance Problem

1. City county collaboration is not enough; governance is bigger than government.


2. Lack of commonly accepted leadership; everyone and no one in charge,

3. Lots of coordination workarounds; But no common mission with milestones

4. Plenty of data; no commonly accepted outcome measures

5. Insufficient funding and insufficient linking of existing funding to mission

6. Align work of existing organizations to a new North Star

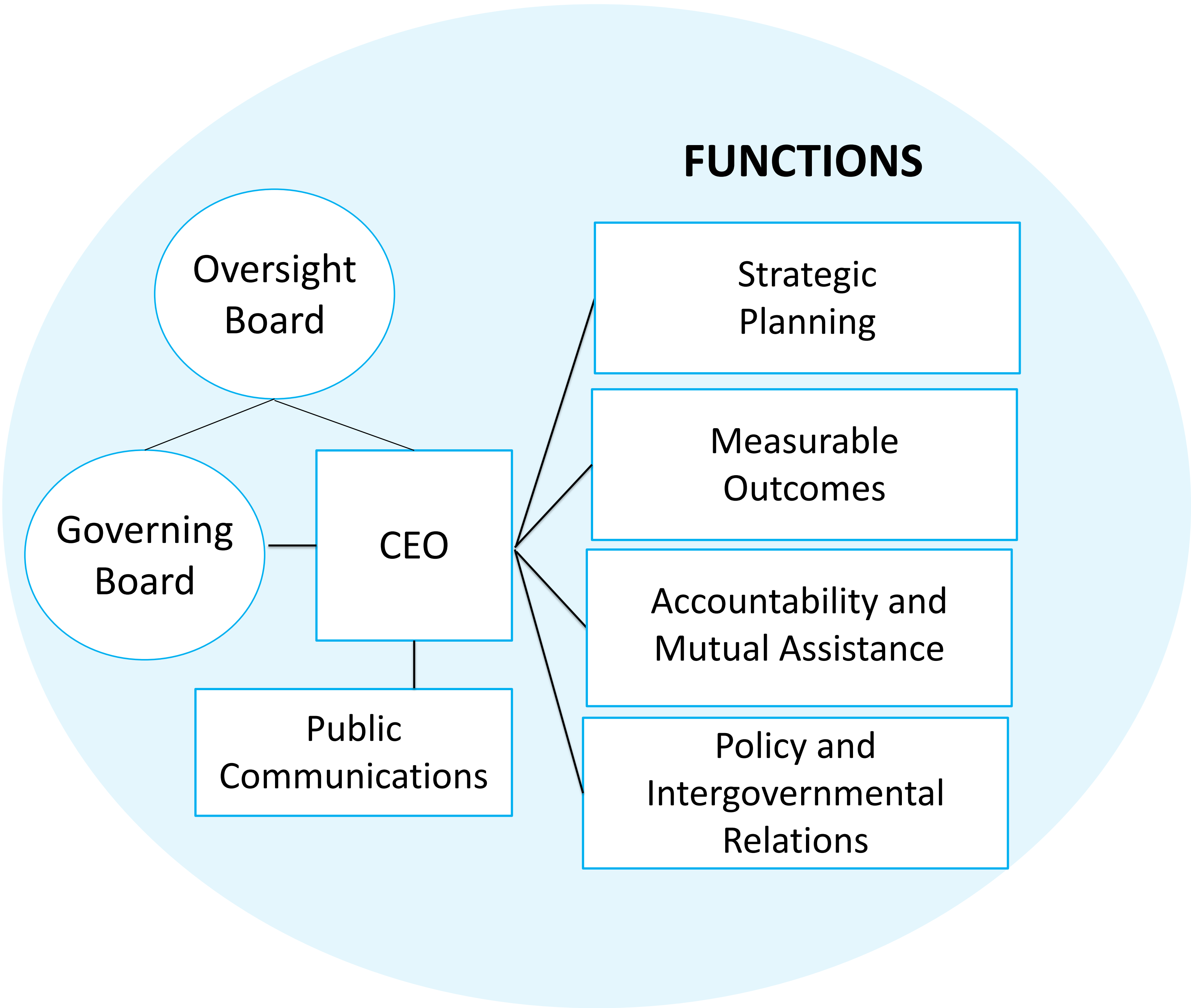


**There's a hole
in the *system*.**

**THERE IS
NO CENTER.**

THE CENTER

The Home Base of the
Community-Wide
Commitment to Addressing
Homelessness in Los
Angeles



Composition of The Governing Board

The Governing Board (n=7), Hires and removes the CEO

Ex officio Co-Chairs: Mayor of the City of Los Angeles and the Chair of the LA County Board of Supervisors

The Chair of the Oversight Board

The CEO of the Center

State representative, designated by the Governor

Representatives of non-LA city local governments

Composition of The Oversight Board

The Oversight Board (n=15-21), Members nominated by the CEO and confirmed by the Governing Board

Philanthropy, Business, Labor

Public school system leadership

Lived Experience and Lived Expertise, including Youth

University and Government Researchers

Leaders of civic, provider and faith-based organizations