



City Clerk Council and Public Services <clerk.cps@lacity.org>

FW: City Council email language

Maynard Brittan <mmb@roxburymgt.com>
To: clerk.cps@lacity.org

Tue, Feb 26, 2019 at 4:58 PM

Honorable City Council Persons

City of Los Angeles

I am writing to you regarding Item No. 17-1143 – specifically the Ordinance relative to reinstating certain streets for public use – that will be heard by the Council tomorrow, February 27th.

As you are aware, the City's investigations have shown that a number of streets technically withdrawn from public use are in fact being used by the public. The City Council's recent actions evidence an intent to ensure that those non-vacated streets be maintained in a safe condition so as to avoid a public safety hazard for the City's residents.

I am a property owner who utilizes the 1.35-mile stretch of Mulholland Drive in Woodland Hills, more commonly known as "Dirt Mulholland," which spans from Saltillo Street to Santa Maria Road in the City of Los Angeles. Although it does not appear that the subject portion of Mulholland was ever formally removed from public use, the City has failed to maintain it to minimum Fire Department safety standards; in its present state it is heavily rutted, and many existing drainage improvements have been rendered inoperable. In light of this, I am respectfully requesting that it be considered for inclusion in any Ordinance passed that would "reinstate" it for public use.

This portion of Mulholland Drive is open to vehicular traffic and is regularly used by residents as a means of access to their homes, as well as by visitors, mail carriers, and delivery personnel. The road also provides crucial access by the City's first responders to enter into the subject part of Woodland Hills and Topanga, and it is an important access route for evacuating these areas in the event of fire or other emergency.

Improvements to this section of Dirt Mulholland would dramatically improve the Fire Department's service and response time to the community. Our Councilman, Bob Blumenfield, is aware of this and has been **extremely** helpful and cooperative with the community.

In light of the above, I strongly urge the Council to not only to include this portion of Mulholland Drive in its Ordinance, but to take steps to install all weather surface on it at the earliest possible time.

Please do not hesitate to contact me should you have any questions.

Respectfully Submitted, Maynard M. Brittan, [2735 Santa Maria Rd. Topanga California 90290](#)



Virus-free. www.avast.com



City Clerk Council and Public Services <clerk.cps@lacity.org>

Comment Regarding City Council Item No. 17-1143 (Feb 27th City Council Hearing)

Nicole Farnoush <nfarnoush@schmitzandassociates.net>

Tue, Feb 26, 2019 at 2:05 PM

To: "Clerk.cps@lacity.org" <Clerk.cps@lacity.org>

Good Afternoon: We are writing to you regarding Item No. 17-1143, which will be heard by the Council tomorrow, February 27th. Specifically, the Ordinance relative to repealing the specific City Ordinances pertaining to reinstating certain streets for public use. We represent a number of the property owners who utilize the 1.35-mile stretch of Mulholland Drive in Woodland Hills, more commonly known as "Dirt Mulholland, which spans from Saltillo Street to Santa Maria Road in the City of Los Angeles.

This portion of the road is used by residents as a means of access to their homes and by visitors. The street, which is unpaved, is heavily rutted and many existing drainage improvements have been rendered inoperable – something that our Councilman, Bob Blumenfeld, who has been **extremely** helpful and cooperative with the community, is aware of. Please see attached photos of vehicles stuck in the mud.

As you are aware, the City's investigations have shown that a number of streets technically withdrawn from public use are not being used by the public. The City Council's recent actions evidences an intent to ensure that those non-vacated streets be maintained in a safe condition, so as to avoid a public safety hazard for the City's residents.

It does not appear however that the subject portion of Mulholland was ever removed from public use. However, the reasoning behind the City Council's action supports making necessary improvements to the roadway. Specifically, this portion of Mulholland Drive is open to vehicular traffic and is regularly used by members of the public and the City's first responders to enter into the subject part of Woodland Hills and Topanga, which consists of narrow and winding roads. Improvements to this section of Dirt Mulholland would dramatically improve the Fire Department's service and response time to the community and emergencies. It is also an important access route for evacuating these areas in the event of fire or other emergency.

The failure of the City to maintain the subject portion Dirt Mulholland in a safe and passable manner could result in City liability for damages, or for compensation to homeowners for obstructed access. As was just experienced in the deadly Woolsey Fire, the importance of safe and efficient egress from hillside areas such as this part of Woodland Hills and Topanga cannot be overstated.

In light of the above, we are strongly urging the Council for assistance in working with the various City Departments towards a decision to install all weather surface on now Dirt Mulholland Drive at the earlier possible time.

Please do not hesitate to contact us should you have any question. We remain ready to assist in his process in any way.

Thank you.

Nicole Farnoush | Project Team Manager | **Schmitz & Associates, Inc.**

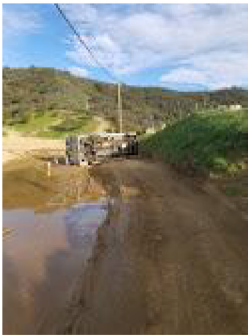
28118 Agoura Rd. Suite #103, Agoura Hills, CA 91301

V: (818) 338-3636 | F: (818) 338-3423

5 attachments



20190221_162710.jpg
2614K



20190221_162859.jpg
4419K



IMAG0110.jpg
6278K



Picture3.jpg
183K

Picture4.jpg
244K

