

**BOARD OF TRANSPORTATION  
COMMISSIONERS**

CRIS LIBAN  
PRESIDENT

SELIKA TALBOTT  
VICE PRESIDENT

DOUGLAS TOHOM  
VIGGEN DAVIDIAN  
RAYMOND REGALADO  
DAVID MARQUEZ  
VACANT

JASMIN SAN LUIS  
ACTING COMMISSION EXECUTIVE ASSISTANT

**CITY OF LOS ANGELES**  
CALIFORNIA



**KAREN BASS**  
MAYOR

**DEPARTMENT OF TRANSPORTATION**

100 S. MAIN STREET, 10<sup>th</sup> FLOOR  
LOS ANGELES, CA 90012

LAURA RUBIO-CORNEJO  
GENERAL MANAGER

February 14, 2025

The Honorable City Council  
City of Los Angeles  
City Hall, Room 395  
Attention: City Clerk

Subject: **Amendment of the Parking Restriction in Preferential Parking District No. 3 in the Reseda Area of Council District 4**

At its regular meeting of February 13, 2025, the Board of Transportation Commissioners considered the evidence presented at the public hearing and approved the above-referenced report. A copy of the Board's action is attached and hereby transmitted to the City Council for consideration and approval.

If you need further information, please contact Michelle Cayton, Supervising Transportation Planner Parking Permits Division, at (213) 972-4935.

Sincerely,

Jasmin San Luis  
Acting Commission Executive Assistant

JSL

Attachment

**BOARD REPORT  
CITY OF LOS ANGELES  
DEPARTMENT OF TRANSPORTATION**

Date: February 13, 2025

To: Board of Transportation Commissioners

From: Laura Rubio-Cornejo, General Manager  
Department of Transportation



Subject: **AMENDMENT OF THE PARKING RESTRICTION IN PREFERENTIAL PARKING DISTRICT NO. 3 IN THE RESEDA AREA OF COUNCIL DISTRICT 4**

**SUMMARY**

The Los Angeles Department of Transportation (LADOT) recommends an amendment of the parking restriction in Preferential Parking District (PPD) No. 3 in the Reseda area of Council District (CD) 4.

**RECOMMENDATIONS**

1. FIND that the block of Garden Grove Avenue between Cantara Street to Roscoe Boulevard allows long term parking for the nearby hospital, causing adverse parking impacts on the block, from which residents deserve immediate relief.
2. FIND that the amendment of the posted restriction in PPD No. 3, pursuant to Los Angeles Municipal Code (LAMC) Section 80.58.d, is exempt from the California Environmental Quality Act (CEQA) as a Class 1 Categorical Exemption under Article III.1.a.3 of the 2002 Los Angeles City CEQA Guidelines.
3. ADOPT the accompanying Resolution to amend the posted restriction within the existing PPD No. 3 boundaries, pursuant to the City Council's November 6, 2018 "Rules and Procedures for Preferential Parking Districts," which currently includes both sides of the following blocks (unless otherwise noted):
  - Darby Avenue between Lorne Street and Cantara Street
  - Darby Place between Lorne Street and Cantara Street
  - Etiwanda Avenue between Lorne Street and Roscoe Boulevard
  - Nestle Avenue between dead end north of Cantara Street and Lorne Street
  - Wynne Avenue between dead end north of Cantara Street and Nestle Avenue
  - Cantara Street between Darby Avenue and Garden Grove Avenue
  - Garden Grove Avenue between dead end north of Cantara Street and Cantara Street
  - Lorne Street between dead end west of Darby Avenue and Nestle Avenue
  - South side of Roscoe Boulevard between Etiwanda Avenue and Garden Grove Avenue
4. AUTHORIZE the following parking restrictions for use on the residential portions of all streets in PPD No. 3:

- NO PARKING 8 AM TO 6 PM, MONDAY THRU FRIDAY; VEHICLES WITH DISTRICT NO. 3 PERMITS EXEMPT
  - 2 HOUR PARKING 8 AM TO 6 PM; VEHICLES WITH DISTRICT NO. 3 PERMITS EXEMPT
  - NO PARKING 6 PM TO 8 AM, 2 HOUR PARKING 8 AM TO 6 PM; VEHICLES WITH DISTRICT NO. 3 PERMITS EXEMPT
  - NO PARKING 8 AM TO 6 PM; VEHICLES WITH DISTRICT NO. 3 PERMITS EXEMPT
  - NO PARKING 6 PM TO 8 AM; VEHICLES WITH DISTRICT NO. 3 PERMITS EXEMPT
5. INSTRUCT LADOT to initiate the necessary procedures for the preparation and sale of parking permits to residents within PPD No. 3, as specified in Section 80.58 of the LAMC.
  6. DIRECT LADOT to post or remove the authorized parking restrictions in the residential area enumerated in Recommendation No. 3, except for areas where parking is currently prohibited in the interest of traffic flow or public safety.
  7. DIRECT LADOT to post or remove the authorized parking restrictions upon receipt and validation of petitions containing signatures from at least 75 percent of the dwelling units covering more than 50 percent of the developed frontage on the street segments requesting installation or removal of the parking restrictions set forth in Recommendation No. 4.

## BACKGROUND

On July 13, 1982, the Los Angeles City Council adopted Ordinance No. 156,943 establishing PPD No. 3 to provide relief for residents from the adverse parking impact caused by staff, patients, and visitors from the nearby hospital, who park on the adjacent residential blocks, making it difficult for residents to park near their homes.

The residential blocks enumerated in Recommendation No. 3 above are currently posted with the following restriction: "NO PARKING 8 AM TO 6 PM, MONDAY THRU FRIDAY; VEHICLES WITH DISTRICT NO. 3 PERMITS EXEMPT".

## DISCUSSION

On January 2, 2023, LADOT received a letter from Councilmember Nithya Raman requesting the addition of "No Parking 6 PM to 8 AM; 2 Hour Parking 8 AM to 6 PM, Vehicles with District No. 3 Permits Exempt". The letter indicated that "the block of Garden Grove Avenue from Cantara Street to Roscoe Boulevard features long term parking from non-residents, inappropriate for the PPD".

LADOT staff reviewed parking conditions at Northridge Hospital and the surrounding area to assess the availability and usage of hospital parking facilities and their impact on the surrounding neighborhood. Staff verified that Northridge Hospital has both an East and West parking garage, each providing at least four stories of parking. The hospital charges up to \$7 per day for parking in these structures. Staff confirmed that many hospital patrons and staff opt to park in the surrounding neighborhood rather than utilizing the hospital's parking garages. This suggests that the cost of parking may be a factor in their decision, leading to an increase in on-street parking demand in nearby residential areas.

LADOT has determined that an amendment to the current parking restriction, as described in Recommendation No. 4 above, will provide parking relief to the residents of the area. The addition of this new restriction will be made available to the entire PPD based on the current Rules and Procedures.

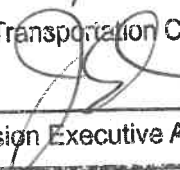
Councilmember Raman and the residents of the Reseda neighborhood concur with the Department's recommendation.

**FISCAL IMPACT STATEMENT**

Revenue from the sale of permits will cover the cost of implementing, administering, and enforcing PPD No. 3. Violations of the posted parking restrictions may result in citation fines deposited into the General Fund.

LRC:JK:KH:MC:fv

Attachments

Approved: 2/13/2025  
Board of Transportation Commissioners  
  
Commission Executive Assistant

## **RESOLUTION**

### **AMENDMENT OF PARKING RESTRICTION IN PREFERENTIAL PARKING DISTRICT NO. 3 IN THE RESEDA AREA OF COUNCIL DISTRICT 4**

WHEREAS, the Los Angeles City Council, by Ordinance No. 152,722, effective September 2, 1979, revised by Ordinance No. 157,425, effective March 18, 1983, amended by Ordinance No. 161,414, effective July 26, 1986, and further revised by Ordinance No. 171,029, effective June 1, 1996, provided for the establishment of Preferential Parking Districts (PPD) by Resolution of the City Council in each case. The latest revisions were adopted by City Council on November 6, 2018, Council File 15-0600-S62, under Section 80.58 of the Los Angeles Municipal Code (LAMC); and

WHEREAS, pursuant to LAMC Section 80.58.k, the Los Angeles Department of Transportation (LADOT) promulgated "Rules and Procedures for Preferential Parking Districts," was revised by Ordinance No. 177,845, effective September 30, 2006, and amended by Ordinance No. 180,059, adopted by the City Council on August 30, 2008, which further updated the permit fees; and

WHEREAS, on July 13, 1982, Preferential Parking District No. 3 was established (Ordinance 156943) in the Reseda area including both sides of the following blocks:

- Darby Avenue between Lorne Street and Cantara Street
- Darby Place between Lorne Street and Cantara Street
- Etiwanda Avenue between Lorne Street and Roscoe Boulevard
- Nestle Avenue between dead end north of Cantara Street and Lorne Street
- Wynne Avenue between dead end north of Cantara Street and Nestle Avenue
- Cantara Street between Darby Avenue and Garden Grove Avenue
- Garden Grove Avenue between dead end north of Cantara Street and Cantara Street
- Lorne Street between dead end west of Darby Avenue and Nestle Avenue
- South side of Roscoe Boulevard between Etiwanda Avenue and Garden Grove Avenue

WHEREAS, the following restriction, "NO PARKING 8 AM TO 6 PM MONDAY THRU FRIDAY; VEHICLES WITH DISTRICT NO. 3 PERMITS EXEMPTED", was adopted to provide relief for the residents of Reseda because parking in the area is substantially reduced or impaired by commuter vehicles of hospital and medical center employees, patients and visitor who are nonresidents for extended periods; and

WHEREAS, there are available off-street public parking areas in the Northridge Hospital Foundation parking facilities for hospital and medical center employees, patients, and visitors who are presently parking within the established preferential parking district; and

WHEREAS, LADOT received a written request from Councilmember Nithya Raman requesting the amendment of the posted restriction and to authorize the posting of “NO PARKING 6 PM TO 8 AM, 2 HOUR PARKING 8 AM TO 6 PM; VEHICLES WITH DISTRICT NO. 3 PERMITS EXEMPT”; and

WHEREAS, the residents submitted a petition to amend the parking restriction in PPD No. 3 and to request new parking restrictions on Garden Grove Avenue between Cantara Street and dead end; and

WHEREAS, LADOT determined that the petitions represented at least 75 percent of the dwelling units, covering more than 50 percent of the developed frontage; and

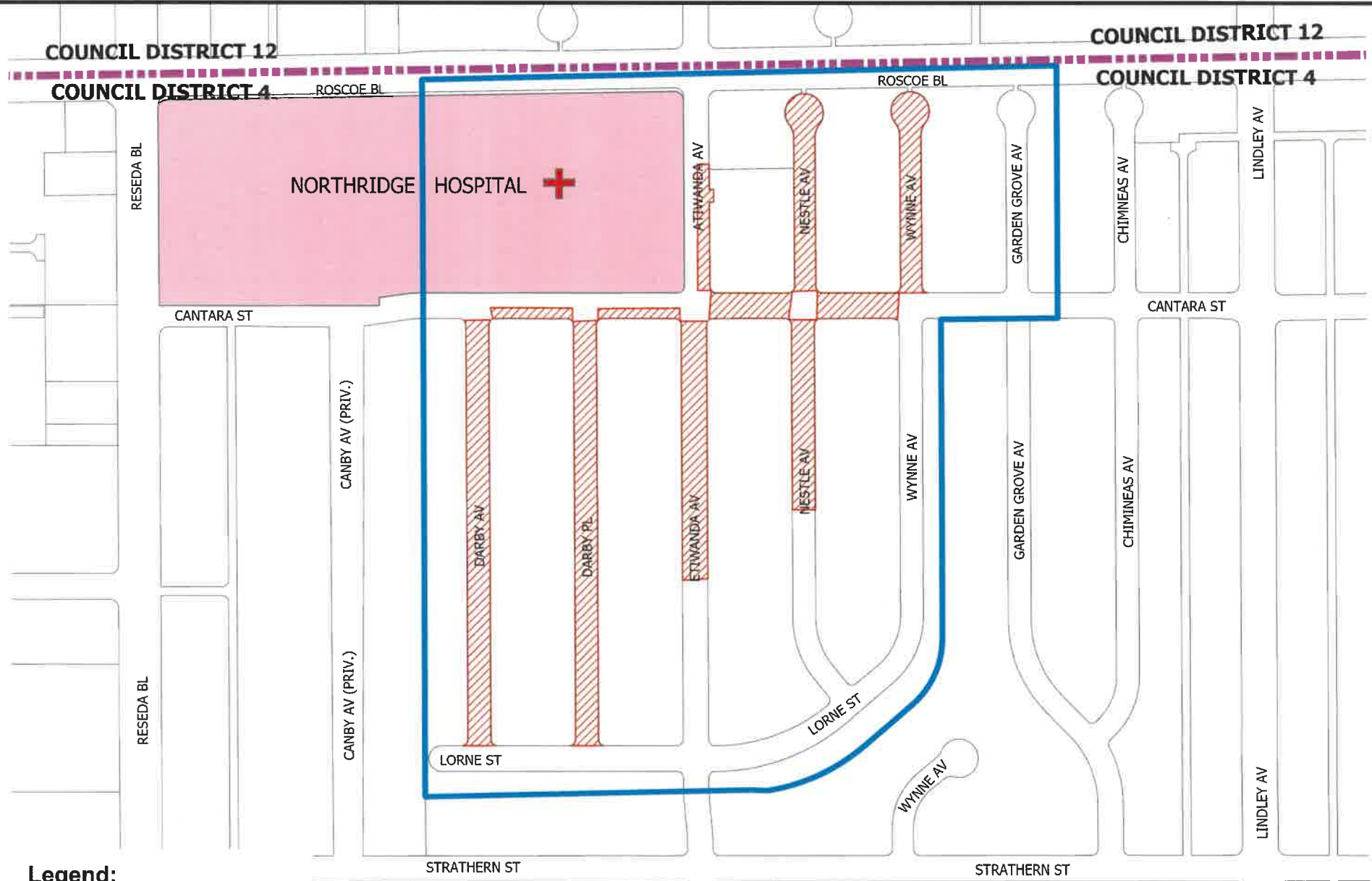
NOW THEREFORE BE IT RESOLVED, that the City Council, pursuant to Los Angeles Municipal Code 80.58, adopt this resolution to amend Preferential Parking District No. 3 to authorize the posting of “NO PARKING 6 PM TO 8 AM, 2 HOUR PARKING 8 AM TO 6 PM; VEHICLES WITH DISTRICT NO. 3 PERMITS EXEMPT”, on the block noted above where residents submitted petitions to amend the posted parking restriction; and

BE IT FURTHER RESOLVED, that upon approval of PPD No. 3 through the adoption of the Resolution, LADOT be authorized to post or remove the following preferential parking restrictions on any of the blocks within the district, without further action by the City Council, upon receipt and verification of the requisite petition(s) as provided for in the adopted "Rules and Procedures for Preferential Parking Districts."




- NO PARKING 8 AM TO 6 PM, MONDAY TO FRIDAY; VEHICLES WITH DISTRICT NO. 3 PERMITS EXEMPT
- 2 HOUR PARKING 8 AM TO 6 PM; VEHICLES WITH DISTRICT NO. 3 PERMITS EXEMPT
- NO PARKING 6 PM TO 8 AM, 2 HOUR PARKING 8 AM TO 6 PM; VEHICLES WITH DISTRICT NO. 3 PERMITS EXEMPT
- NO PARKING 8 AM TO 6 PM; VEHICLES WITH DISTRICT NO. 3 PERMITS EXEMPT
- NO PARKING 6 PM TO 8 AM; VEHICLES WITH DISTRICT NO. 3 PERMITS EXEMPT


BE IT FURTHER RESOLVED, that LADOT be directed to take appropriate steps to prepare, issue, and require payments for permits from the residents of PPD No. 3 in accordance with the LAMC and Rules and Procedures adopted by the City Council for PPDs.

CITY OF LOS ANGELES - DEPARTMENT OF TRANSPORTATION  
**PREFERENTIAL PARKING DISTRICT NO. 3**  
 COUNCIL DISTRICT NO. 4 Ordinance No. 156,943/C.F. 81-5863  
**Valley Enforcement**



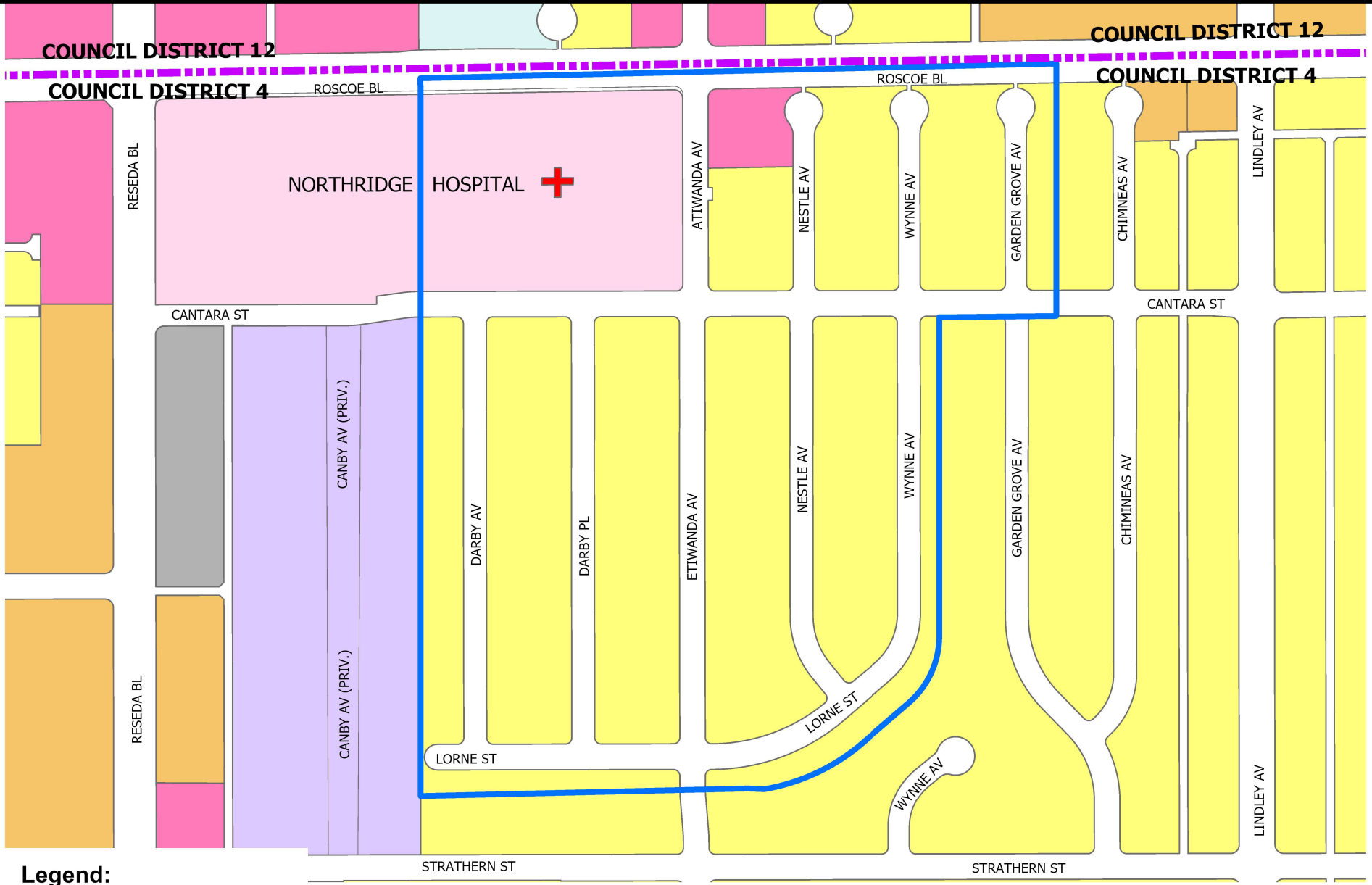
**Legend:**

-  PPD No. 3 Boundary
-  Council District Boundary
-  Hospital

 No Parking 8 am - 6 pm Mon Thru Fri;  
 Vehicles With District No. 3 Permits Exempt



CITY OF LOS ANGELES - DEPARTMENT OF TRANSPORTATION  
**PREFERENTIAL PARKING DISTRICT NO. 3**  
COUNCIL DISTRICT NO. 4 Ordinance No. 156,943/C.F. 81-5863  
**Valley Enforcement**



**Legend:**

- |  |                           |  |              |  |                 |
|--|---------------------------|--|--------------|--|-----------------|
|  | PPD No. 3 Boundary        |  | Residential  |  | Gated Community |
|  | Council District Boundary |  | Commercial   |  | Church          |
|  | Hospital                  |  | Multi-Family |  | Parking Lot     |





**NITHYA  
RAMAN**

Los Angeles  
City Councilmember  
4th District

January 2<sup>nd</sup>, 2023

Laura Rubio-Cornejo, General Manager  
City of Los Angeles Department of Transportation  
100 S. Main Street, 10th Floor  
Los Angeles, CA 90012

**Re: Exploration of Establishment of new Regulations for Garden Grove Avenue in Preferential Parking District (PPD) #3**

Dear Laura,

I write you to request that the Los Angeles Department of Transportation (LADOT) conduct appropriate studies and distribute petitions to interested community members for the introduction of new regulations for Garden Grove Avenue, from Cantara Street to Roscoe Boulevard, in Preferential Parking District (PPD) #3, in the Reseda community of Council District 4

The block of Garden Grove Avenue from Cantara Street to Roscoe Boulevard features long term parking from non-residents, inappropriate for the PPD.

I request the following parking restrictions be assessed for the following streets listed below: "No Parking 6 PM to 8 AM; 2 Hour Parking 8 AM to 6 PM, Vehicles with District No. 3 Permits Exempt." Please work with the neighbors to determine the best days of the week for regulation.

The street list (both sides of the street for each street) for assessment for the new regulations in PPD #3 follows:

1. Garden Grove Avenue between Cantara Street and Roscoe Boulevard.

Thank you for your support in this matter. Mehmet Berker, my Director for Transportation, Infrastructure, and Public Space is lead on this effort and can be contacted with any questions.

Sincerely,

Nithya Raman  
Councilmember, 4th District  
City of Los Angeles

Cc: Felix Valde, LADOT  
Alek Bartrosouf, LADOT  
Silva Abramian Eltchi, LADOT